

# UK1

FOR ADVANCED  
D&D® GAMES

## Dungeon Module UK1 Beyond The Crystal Cave

By Dave J. Browne, Tom Kirby and Graeme Morris

AN ADVENTURE FOR CHARACTER LEVELS 4-7



Fleeing the rage that consumed their feuding families, Juliana and Orlando fled to the Cave of Echoes, where it is said every wish is granted. Two years have passed, and all attempts to return the lovers to their parents have failed, though some believe them lost in the enchanted garden beyond the cave. Many are the rescuers venturing into that enchanted park; a few have returned after long absences, their minds and memories curiously disturbed. Now, the handsome reward offered for the return of the lovers has tempted you, but who knows what lies beyond the Crystal Cave?

©1983 TSR Hobbies, Inc. All Rights Reserved. Printed in U.S.A.



TSR Hobbies, Inc.  
POB 756  
Lake Geneva,  
WI 53147

TSR Hobbies (UK) Ltd.  
The Mill, Rathmore Road  
Cambridge CB14AD  
United Kingdom

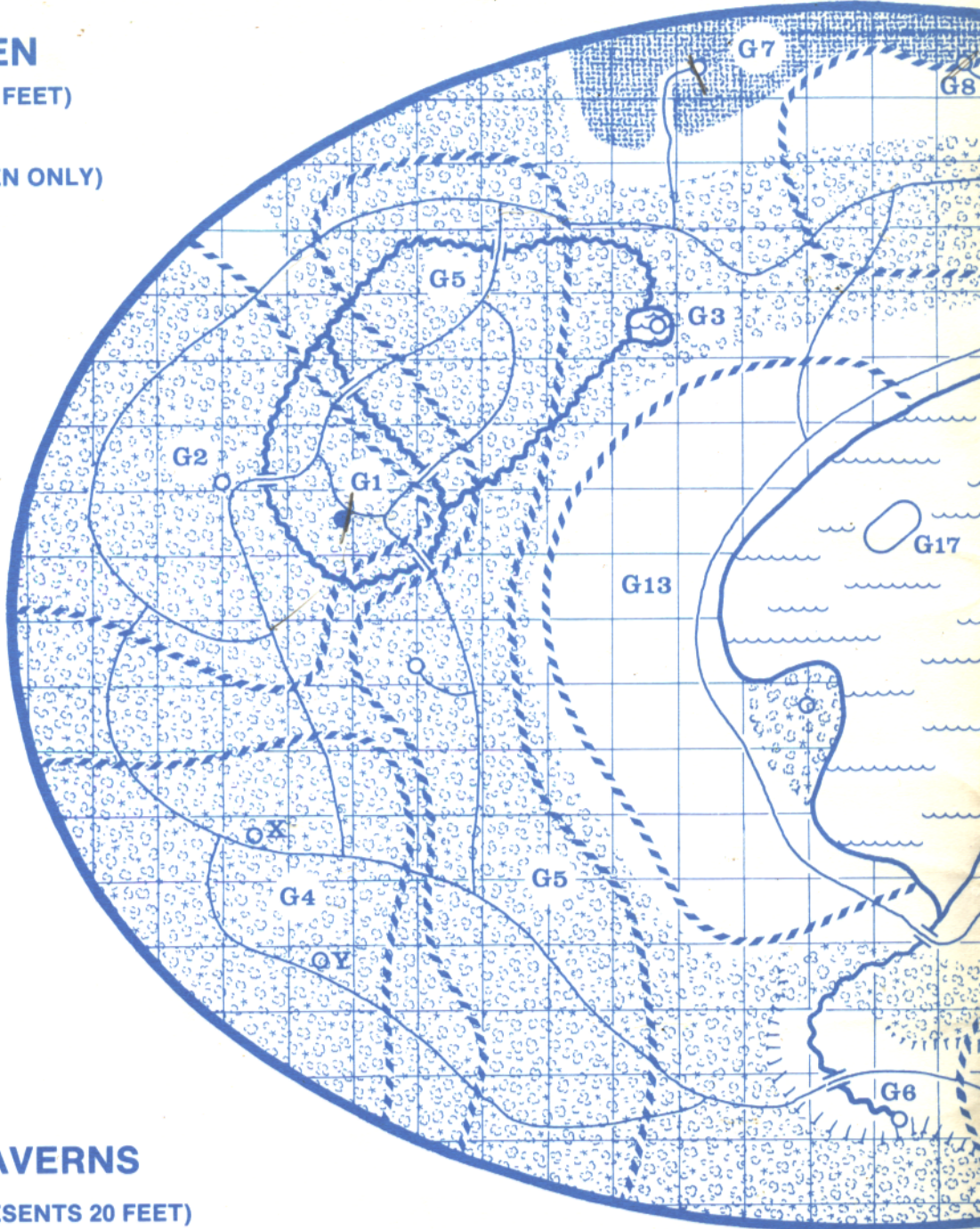
9066

# PORPHERIO'S GARDEN

(EACH SQUARE REPRESENTS 100 FEET)

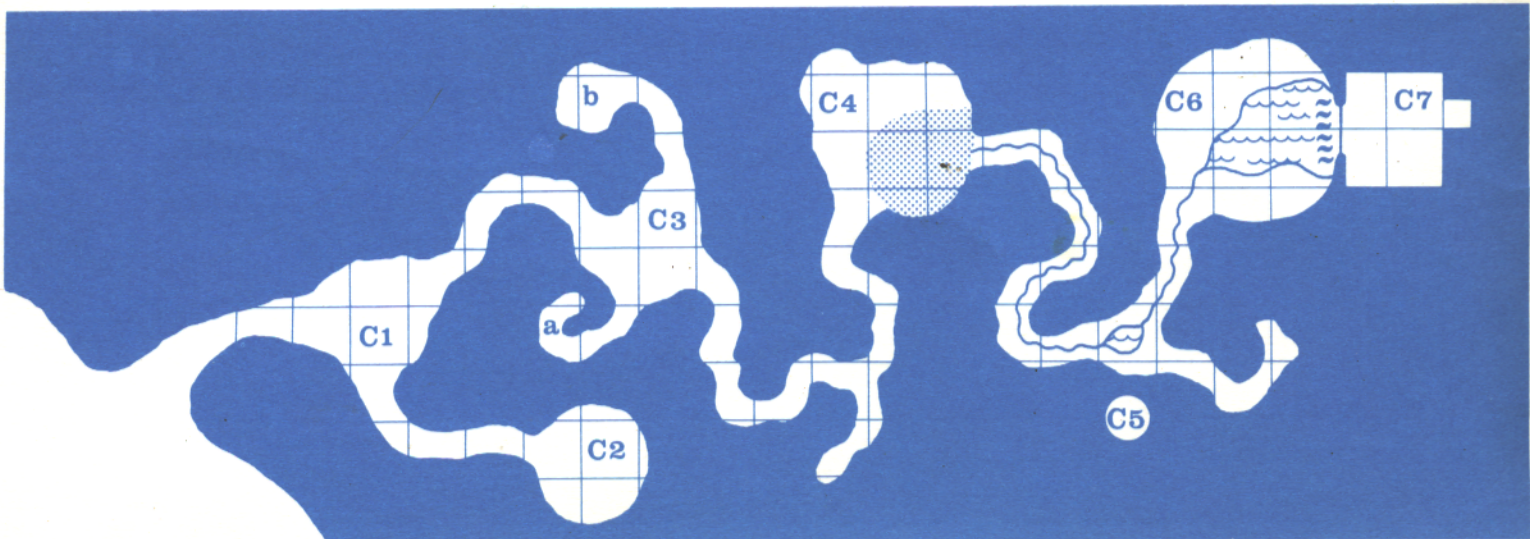
## KEY (FOR PORPHERIO'S GARDEN ONLY)

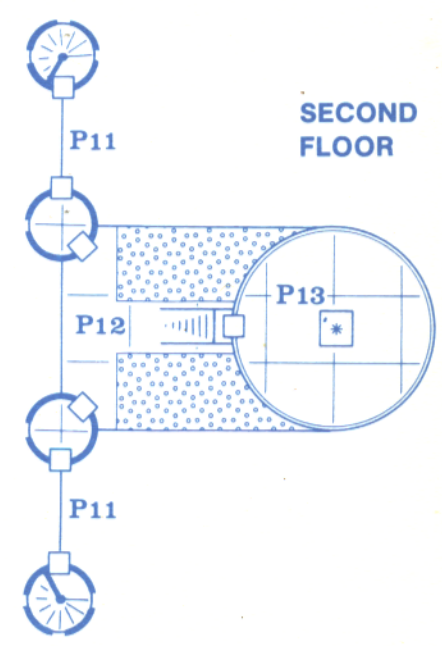
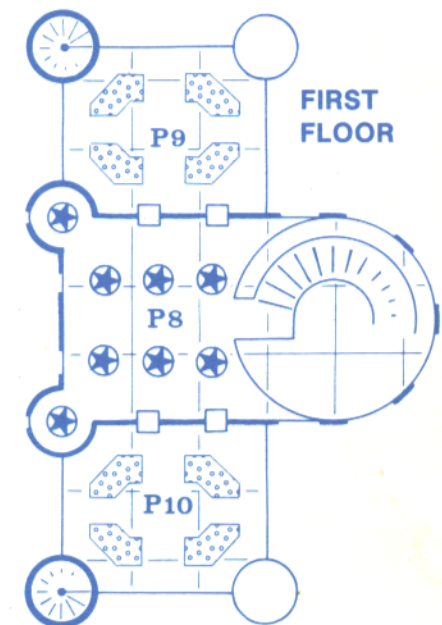
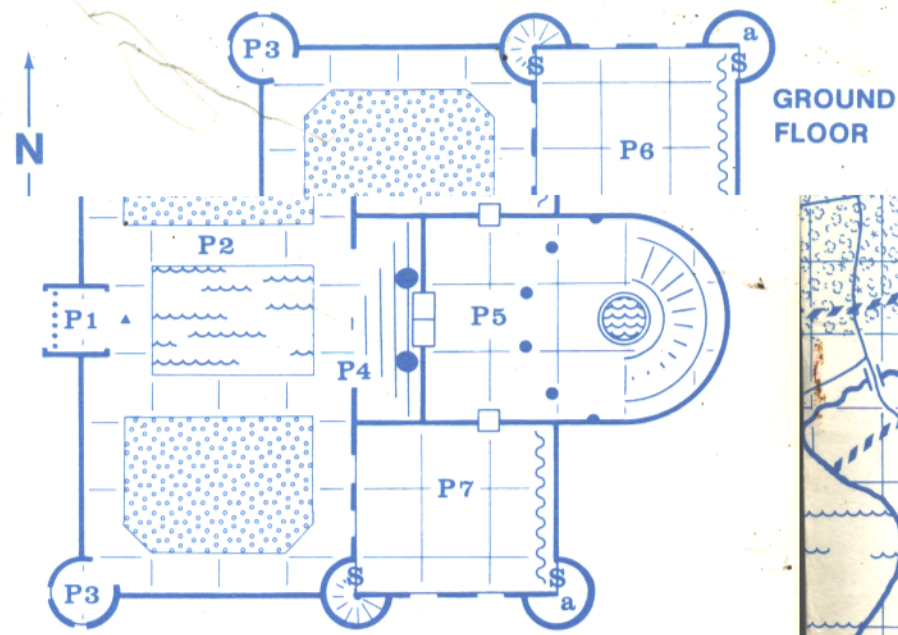
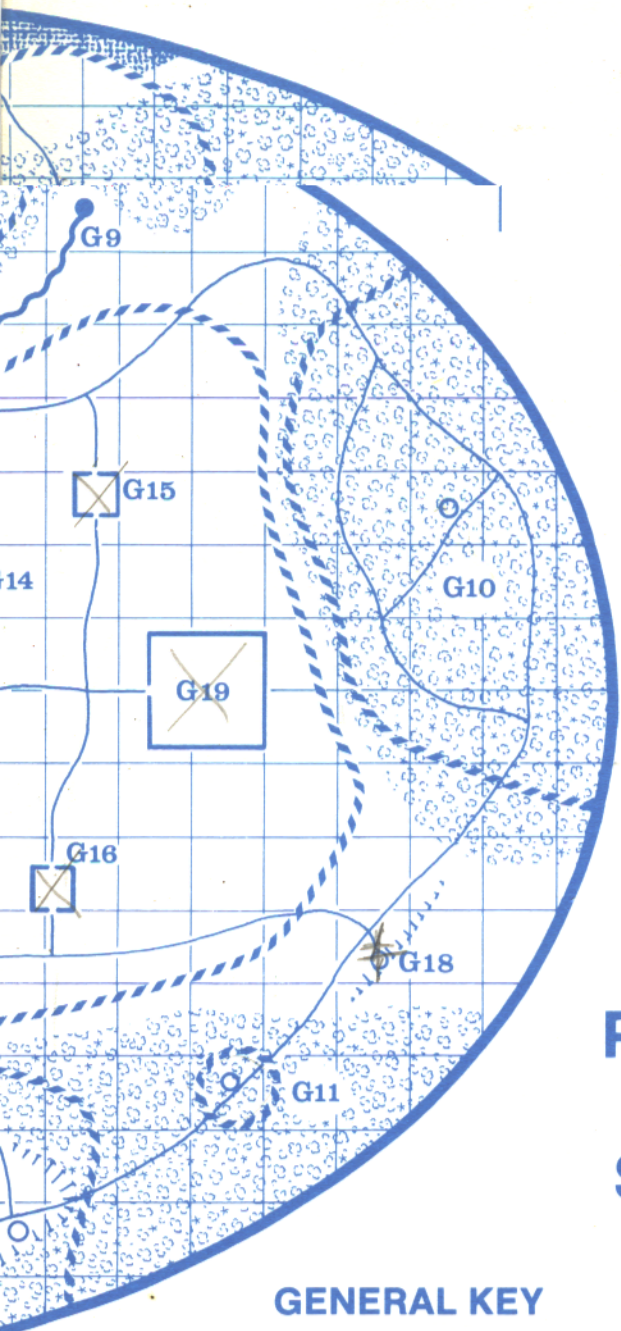
	PORPHERIO'S CARRIER
	WOODS
	BOUNDARY OF ENCOUNTER AREA
	RIVER/STREAM
	PATH
	LAIR
	OTHER FEATURE DESCRIBED IN TEXT
	WATER
	STEEP BANK/CLIFF
	BRIDGE
	ROCKS



## ENTRANCE CAVERNS

(EACH SQUARE REPRESENTS 20 FEET)



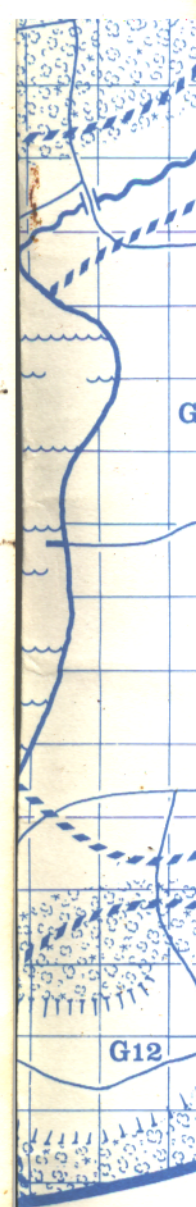


# PALACE OF SPIRES

## GENERAL KEY

(FOR ENTRANCE CAVERNS, PALACE OF SPIRES AND MAPS IN MODULE BOOKLET)

	DOOR		WATER
	SECRET DOOR		GATE
	CONCEALED DOOR		FLOWER BED
	STAIRS		STATUE
	SECRET TRAP DOOR		MUD
	LADDER UP TO TRAP DOOR ABOVE		WATERFALL
	PILLAR		CURTAINS



## DUNGEON MODULE UK1

# Beyond The Crystal Cave

By Dave J. Browne,  
Tom Kirby and Graeme Morris

AN ADVENTURE FOR CHARACTER LEVELS 4-7



*Fleeing from their feuding families, two star-crossed lovers sought refuge in the Cave of Echoes, fabled in legend. Desperate for the return of their loved ones, the families are offering a large reward to any band of brave adventurers who will enter the caves in pursuit of the couple. But will bravery be enough? For who knows what lies beyond the Crystal Cave?*

*This module is for use with the ADVANCED DUNGEONS & DRAGONS® game system. Contained within are all the maps and encounter descriptions needed for a complete adventure. The Dungeon Master and players should be aware, however, that it will probably be an adventure unlike any they have experienced before!*

Distributed to the book trade in the United States by Random House, Inc. and in Canada by Random House of Canada, Ltd.  
Distributed to the toy and hobby trade by regional distributors.  
Distributed in the United Kingdom solely by TSR Hobbies (UK) Ltd.

ADVANCED DUNGEONS & DRAGONS, DUNGEONS & DRAGONS, AD&D and D&D are registered trademarks owned by TSR Hobbies, Inc.

©1983 TSR Hobbies, Inc. All Rights Reserved. Printed in U.S.A.

TSR Hobbies, Inc.  
POB 756  
Lake Geneva,  
WI 53147



TSR Hobbies (UK) Ltd.  
The Mill, Rathmore Road  
Cambridge CB14AD  
United Kingdom

PRINTED IN U.S.A.

9066

## ADVANCED DUNGEONS &amp; DRAGONS®

## Dungeon Module UK1

## BEYOND THE CRYSTAL CAVE

This is an intermediate level module which is intended for use with the ADVANCED DUNGEONS & DRAGONS® rules. It is designed for 5-10 characters of levels 3-6. The party should include a cleric or a druid (see encounter area **C6 CRYSTAL CAVE**).

The island Sybarate, on which the adventure is set, is on the **WORLD OF GREYHAWK™** map (hex 04, 14) about one mile off the south coast of Fairwind Isle in Jeklea Bay.

If you plan to play in this module as a character, please *stop* reading here. The information in the rest of this module is for the DM only. Knowing the details of this adventure in advance will spoil the surprises and the excitement of the game for everyone concerned.

This module contains a complete adventure and to assist the DM is split into five separate parts.

**Part 1. INTRODUCTION.**

**Part 2. THE ENTRANCE CAVERNS** (encounter areas C1-C7).

**Part 3. PORPHERIO'S GARDEN** (encounter areas G1-G19).

**Part 4. THE PALACE OF SPIRES** (encounter areas P1-P13).

**Part 5. APPENDIX.** The appendix includes details of new monsters, a new demi-god, the legend of the garden and a roster of possible adventurers.

Throughout the module certain standard procedures have been adopted to help the Dungeon Master run the adventure. Parts of the encounter descriptions have been enclosed by black lines. These are usually descriptions of the area the party is in and are designed to be read aloud to the players where appropriate. The reader will also notice that following each character or monster name is an abbreviated listing of the appropriate abilities. Further monster details can be found in the **Monster Manual** or **FIEND FOLIO™** Tome. The abbreviations used are: AC = armour class, MV = movement, HD = hit dice, C = cleric, F = fighting man, M = magic user, NM = normal man or woman, hp = hit points, #AT = number of attacks, D = damage, SA = special attack, SD = special defense, AL = alignment, NPC = non-player character, NSA = no special abilities (referring to swords), S = strength, I = intelligence, W = wisdom, D = dexterity, C = constitution, Ch = charisma, DM = Dungeon Master, **DMG = Dungeon Masters Guide.**

## PART I - INTRODUCTION

## THE ISLAND OF SYBARATE

The island of Sybarate is located in the mouth of Jeklea Bay in the Azure Sea (see the **WORLD OF GREYHAWK™** map) about 1 mile off the south coast of Fairwind Isle. The Commodore of Fairwind rules the island through his local governor (a 7th level fighter, AL LN). Sybarate has an area of about 20 square miles and a small fishing port named Sybar serves as its capital, centre of administration and main market. The governor's palace and various executive offices are all situated here, as are the residences of the island's Bishop David Arun Del (5th level cleric, AL NG) and the local magic user Pareesh Riest (5th level magic user, AL NG).

Sybar is situated on the north coast of the island and enjoys a daily ferry service to and from Fairwind which arrives each mid-morning and departs mid-afternoon. About once a week one of the commodore's war vessels calls with orders for the governor and to help maintain the commodore's authority. Occasionally a merchantman will dock to discharge cargo. There are several large villages with an economy based on fishing and agriculture — there being extensive olive, orange and lemon groves, vineyards and vegetable gardens, while on the central hills flocks of sheep and goats are grazed. The population is civilized, industrious and friendly, but hot blooded and quick tempered — an insult can easily give rise to a blood feud. There are no outlaws or brigands on the island and all other monsters (outside Porpherio's fabled Garden — see below) have been controlled. A reasonable level of law and order is maintained by the governor's troops: a small body of about 50 men (each typically AC 7; MV 12"; F 0; hp 3; #AT 1; D as weapon (usually long sword). Justice, if somewhat rigorous, is at least impartial and incorrupt.

**Porpherio's Garden** is situated near the south coast of the island at the opposite end to the township of Sybar. It is easy to locate — being on the crown of a grassy knoll — and all the natives know of its whereabouts, though none of them will attempt to enter it.

## INTRODUCING THE PLAYERS TO THE ADVENTURE

The DM will probably find it convenient to start the adventure on Fairwind Isle, where the adventurers will hear tales of a fortune in reward money being offered by the governor of the nearby island of Sybarate. After taking ship to the island, the party should be encouraged to visit the governor, who will receive them well as he is in sore need of their aid. After the usual preliminaries, during which the governor will assure himself of the party's good faith, he will invite the party into his chambers. Once there he will tell them how, about two years earlier, his beloved daughter Juliana eloped with Orlando, the son of a noble family which was at feud with his own. The couple fled across the island and disappeared into some caves below the wonderful park-like area in the south known as **Porpherio's Garden**. The governor has concluded that they somehow entered the garden. In their common grief the families have settled their differences and resolved to do all in their power to rescue their offspring. Due to the reverence in which they hold it, however, no one on the island will enter the garden. This is why the governor is offering 10,000 gp to any party who can recover his long lost daughter and her lover. At this stage in their discussions the governor will relate to the party the legend associated with **Porpherio's Garden**. The story will take on the form of a recital, the governor clasping his hands behind his back, gazing at the ceiling and almost chanting the following lines, as if from memory:

Long ago on the lovely island of Sybarate there lived the beautiful half-elven princess, Caerwyn, with her human lover and the magic user Porpherio Profoundeus. It was there on her estates that together they laid out and built a large garden. It was an earthly paradise, serving both as a symbol of their enduring love and as a seclusion to which they could retire, when they so desired.

They stocked their garden with the loveliest of plants — all those growing things most delightful to the elven folk — and encouraged the gentler creatures both fantastic and mundane to make it their home. Then Porpherio laid enchantments on it to enhance its beauty and pleasantly to beguile and tease those honoured few who on occasion were invited as guests to enjoy the garden of their hosts.

Lovely it was, beyond compare, making the gaudier gardens of the eastern monarchies vulgar by comparison; a gem set in the crown of the island Sybarate. A place of hushed peace and serenity whose music was birdsong and the drone of bees; where majestic trees made pleasant shade in golden days and strange, lovely shadows in silver and indigo nights. Where days and nights both were heavy with the perfume of a thousand different blossoms. So there Caerwyn and Porpherio lived their life of love and with their garden became a living legend, inspiring poets and bards with the story of their mutual devotion and the beauty it brought forth.

But, alas, all flesh is mortal and even elves must die. So it was with Caerwyn in the fullness of time, and the ending of her life was like the sadness after song. After her passing Porpherio caused a marble tomb to be raised in the midst of the home that had given them both so much delight. Then he went about and on their paradise placed new enchantments of a fiercer kind than heretofore to guard and preserve forever its peace from all intruders. Porpherio thus protected the fabric of his garden, but to tend and nurture the living things he called upon a Friend to dwell there forever. When these tasks were done he ceased his personal magicks and allowed his own life to slip away, leaving instruction that he and she should lie together for all eternity in the tomb within the garden of their love, so that even in death they would not be apart.

So it remains to this very day, inviolate and impenetrable, a place where it is always summer and always peaceful and where none may hope to intrude. There have been those who tried, spurred with greed by the stories of great treasures entombed with the two lovers. For that is always the way of man — give him a mystery and he needs must solve it, whisper gold and he needs must have it; but within the garden none have as yet accomplished either. Most failed even to obtain entrance there; of those who did, some have returned after a long absence — their minds and memories curiously disturbed.

After the narrative, if questioned, the governor will volunteer four of the following 12 rumours. The DM should determine at random those to be related. The governor will be unable to offer any other useful information, and he knows nothing about the "Friend" mentioned in the story. This "Friend" is the Green Man — see **PART V — APPENDIX**. Other rumours can be gained by questioning the island's bishop and the local magic user who will give two additional rumours each. If the DM wishes he or she may develop the governor, the bishop and the magic-user by rolling characteristics for them as normal NPCs. This task is not essential as, apart from providing the reward money, none of these characters is vital to the story. Such preparation, however, does give colour to an adventure and makes it seem more real to the players. If the party subsequently question islanders there is a 20% chance that each one will know one of the remaining stories and thus the party should have no difficulty in accumulating all 12. Note that the majority of the rumours are FALSE or misleading. This is due to the fact that, within living memory, no one has returned from adventures in the garden with faculties intact.

#### The rumours:

1. There is a magical fountain in the garden whose waters, when drunk, grant eternal youth (FALSE).
2. Within the tomb there is a vast collection of treasures and magic items (FALSE).
3. It is always summer within the garden (TRUE).
4. Fire, both natural and magical, will not burn within the garden (TRUE).
5. Certain rose blossoms contain gems within their petals (FALSE).
6. The magic user Porpherio is not dead at all but is really a lich (FALSE).
7. The loud singing of hymns and psalms will charm certain of the garden creatures (FALSE).
8. There is nothing evil in the garden (TRUE).
9. If pursued by any of the garden creatures, the climbing of an oak tree is a certain escape (FALSE).
10. It is not possible to fly magically over, into or within the garden (TRUE).
11. A huge red dragon lies in a magical sleep within the garden and any use of magic nearby will awaken it (FALSE).
12. There is a cave near the garden in which all wishes are granted (partially TRUE).

Before wishing them well on their quest, the governor will impress on the party that every occupant of the island holds the garden in great reverence and awe and that in order that they win the reward the task must be completed without harming anyone or anything within the garden. The governor is quite serious in this assertion and will indeed refuse the reward to parties who have ransacked the area. He is not an unreasonable man, though, and a party that has reluctantly killed an aggressive creature will not necessarily lose the reward. The DM should take into account the attitude with which the group approached their task when making this decision. The governor will be aware, upon their return, of any killing and looting in which the party indulged themselves, by magical means. The governor has a **medallion of ESP** (60' range) which he will use while questioning the party. It is quite possible for the party to hire a local person to guide them on their quest — for a suitable fee, of course.

#### THE LOVERS' FATE

What the governor cannot tell the party, as he does not know it, is that the young couple, having desperately sought aid from the **Cave of Echoes** (see area C2) gained entry to **Porpherio's Garden**. On arrival in the garden they drank the waters of the **Fountain All Heal** (see the description of area G9) and have fallen under its enchantment. Under no circumstances will they now voluntarily leave the garden and it will take a full wish to break this particular magic and release them from its bondage. Further, the other creatures in the garden, who over the years have kept alive the memory of their long departed master and mistress with stories of their shared devotion, their goodness and their physical beauty, have concluded that these two young people, so fair of face and so obviously in love, are Caerwyn and Porpherio returned at last to earth. Consequently they will be bitterly hostile to any attempts to remove the young lovers from the garden; defending with their own lives the persons of their rediscovered master and mistress.

The runaway lovers, Juliana and Orlando, live in the **Palace of Spires**. This building was formerly the residence of Caerwyn and Porpherio in the garden, but is now hidden on a parallel dimension where it also serves as Caerwyn's and Porpherio's tomb (see **Part IV — PALACE OF SPIRES** below).

Once the fountain's spell is broken and the young lovers are convinced that it is indeed safe for them to return home they will agree so to do. But it will be a reluctant agreement with many tears and long farewells.



### GENERAL DESCRIPTION OF PORPHERIO'S GARDEN AND ITS MAGICAL PROPERTIES

Please refer to the map on the inside of the module cover.

The garden stands atop a small hill. It is in the shape of an ellipse and is about 2,600 feet long and 1,900 feet wide at its widest section. It is entirely surrounded by an impenetrable force wall created by Porpherio. This wall is a complete ellipsoid (a solid oval shaped body) — thus tunnelling or flying will gain the party nothing in their attempts to enter the garden. In addition to being impenetrable the wall has strange properties. When viewed from a distance it is transparent — the garden is visible from afar, and from within the garden there is an excellent view of the surrounding countryside. When approached the wall gradually becomes opaque. It begins to mist over when the viewer is 30 feet away and as he or she approaches the opacity increases until, when about 10 feet away, vision through it is impossible.

Just prior to his death, Porpherio laid five great enchantments on the entire garden area which are still in full effect.

1. The flow of time in the garden has been greatly slowed in relation to the outside world so that all that dwell within it age very slowly. This may pose a problem for the adventurers since when they return to the outside world they may have been absent some time. They will not, however, suffer any ill effects on their return (e.g. unnatural ageing) apart from a partial loss of memory (see the description of area P13). This enchantment also means that from the inside of the garden the passing of time (the passage of the sun etc.) on the outside will appear to be going at the expected rate. Thus characters will not be readily aware of the slowing of time within the garden.

2. No fire, natural or magical, can be made to burn in the garden.
3. Magical or psionic flying or levitation cannot be performed in the garden.
4. No matter what the season outside the garden, inside it is always summer. During the garden's nights a little light rain (from small, magically produced clouds) provides whatever moisture the plants need.
5. In order that the simple local folk who once benefited from his charity should be well provided for in time of future need Porpherio created the **Cave of Echoes (C2)** to help them. See the description in **Part II** for how it does so.

Because of Porpherio's first enchantment, time within the garden moves over 700 times slower than that on the outside. For each day spent in the garden two years pass in the outside world; for each hour spent in the garden one month passes. The DM must therefore take care with his recording of time.

It is possible that characters will wish to try to destroy the force field. Physical assault will not harm it; magical assault may cause a temporary weakening of the field. For this to occur a spell cast by a magic user of 20th level or higher would be required. Any weakening of the field, however, will cause a temporal wind to sweep the caster into a time vortex. The DM may choose to have the caster arrive in a random dimension at a random time.

As a consequence of the enchantments Porpherio cast the entire garden and all its contents and inhabitants will show a strong dweomer if **detect magic** is cast. Further, such detection will, where applicable, indicate that all the different forms of magic possible: conjuration, alteration, abjuration etc., are present, thus making the use of **detect magic** spells and artifacts useless.

Because the garden has a highly magical nature and because it is constantly tended by the Green Man (see **Part V — APPENDIX**) there are other interesting side effects.

Firstly, *druids will operate within the confines of the garden at one level higher than normal.* This affects their spell abilities, hit points and saving throws. The druids will gradually become aware of their new-found power during the first six turns they spend in the garden. The advancement is temporary and is lost when the druid returns to the outside world. As the advancement of druids represents their greater one-ness with the garden than other classes, the loss of the benefits should not cause the druids harm. Thus the loss of the hit points gained would never reduce the druid to 0 or less hit points.

Secondly, many spells will not operate or will have different effects to normal:

*Spells which will not operate.*

animal summoning I, II and III  
burning hands  
call lightning  
charm monster  
charm person  
charm person or mammal  
charm plants  
conjure fire elemental  
control weather  
control winds  
creeping doom  
delayed blast fireball  
earthquake  
entangle  
explosive runes  
find familiar

fire storm  
fire trap  
flame arrow  
flame strike  
fly  
hallucinatory forest  
hallucinatory terrain  
hypnotism  
incendiary cloud  
insect plague  
jump  
levitate  
mass charm  
produce flame  
produce fire  
pyrotechnics

fireball  
fire charm  
fire seeds  
fire shield

reverse gravity  
summon insects  
wall of fire  
weather summoning

*Spells which will attract the Green Man*

Any spell that affects plant or animal life immediately may attract the attention of the Green Man. These include any spell that causes death directly and those that affect normal growth such as **animal growth**, **animate rock** or **warp wood**. The Green Man will use his teleport ability to arrive on the scene on a 1 on 1d6 (see **Part V — APPENDIX**).

*Spells which may not have their usual effect.*

**chariot of Sustarre** will not operate through the time barrier  
**command** will operate but creatures will not obey (this may confuse the caster as he or she will be of the opinion that **command** operates normally)

**conjure elemental** will not conjure a fire elemental, though other elementals may be conjured as normal  
**detect charm** is as normal but note that the effects of the **Fountain All Heal** is not a charm

**dimension door** will take the traveller through the time barrier but only to the astral plane

**dispel magic** will only work on a specific item; it cannot be used on areas of the garden

**Drawmil's instant summons** will work but articles called from outside the barrier will be lost in time

**glyph of warding** will not produce a fire glyph

**predict weather** will work but the forecast will always be "fine"

**snake charm** will work but there are no snakes in the garden  
**snare** will operate but will not work against the interests of the garden

**suggestion** and **mass suggestion** have limitations similar to those applying to **snare**

**trip** has limitations similar to those applying to **snare**

**true sight** will not reveal the **Palace of Spires**



The only entrance to the garden (apart from travel via other planes of existence) is through the cave complex under the south-west side of the hill on which the garden stands, and which includes the **Cave of Echoes (C2)** (see **Part II — THE ENTRANCE CAVERNS** and the map on the inside of the module folder). These caves were formed by the river that once flowed freely from the garden but which now, due to the time



change, no longer reaches the cave opening. Over the aeons, the original river bed in the surrounding countryside has been refilled and covered without trace. If looked for, the entrance to the cave complex may easily be found.

The garden grounds, portions of which can be seen through the barrier, are extremely well maintained and beautifully ordered as if by a team of expert gardeners. The grounds fall into two distinct categories: woodland and lawn.

The woodlands are pleasant, sunny, open places with the trees well spaced apart and a rich greensward studded with a multitude of flowers. Unless otherwise indicated, there is a generous collection of species of trees and other plants that includes the tropical, sub-tropical and temperate. The tree species present include cypress, almond, cedar, olive, maple, rowan, holly, box, mahogany, redwood, ash, elm, birch, beech, yew, chestnut, poplar and willow; oak is present but not common. Pedants among the players may complain about the mixture of species (for example — having shrubbery and grass growing beneath a beech tree) — the DM should remind them that the area is magical and almost anything can happen. The woodlands are threaded by pathways. These pathways are obvious when walked upon — or when crossed — as they are slight depressions in the turf that bear no flowers. But, once abandoned, a path may only be found by crossing it. When not on a path a party cannot follow their desired route automatically as the woods are confusing. On each turn roll a d6: on a one or two the party will wander at 45 degrees to the left of their chosen route, on a three or four they will go where they intend and on a five or six they will wander at 45 degrees to the right of their chosen route.

The lawns are not difficult to cross; characters may go anywhere on them without difficulty and without becoming lost. As in the woodland, the paths cannot be seen unless followed or crossed. Despite their neat appearance, the lawns are not cut, but like all else here grow under the direction of the songs of the Green Man (see **Part V — APPENDIX**), who was persuaded by Porpherio to become the keeper of the garden.

The garden inhabitants are potentially hostile to any intruding party. If the party does no harm they will normally meet nothing worse than extreme indifference, although some inhabitants will attack on sight or under certain circumstances (see detailed descriptions for each encounter). Any form of aggression (either verbal or physical) or any hint that the party has come to take away the two lovers will result in assault from the inhabitants. Under no circumstances whatever will garden inhabitants (including those charmed by the **Fountain All Heal** — see the description of area G9) be persuaded, charmed, hypnotised or controlled into betraying in any way the two lovers who they believe to be Caerwyn and Porpherio re-born. During conversation with some of the more garrulous creatures (for example the leprechauns) hints may be dropped that somewhere there is a palace. This is the **Palace of Spires** which once stood as Caerwyn and Porpherio's residence in the garden but now exists as their tomb in a parallel dimension. It may only be reached via the teleport mechanism in the garden maze (G19) — see **Part III — PORPHERIO'S GARDEN**, below.

Not all the garden denizens were present in Porpherio's time. A treant has made a home there (although how he managed to gain access to the garden is a mystery to the other inhabitants) and the Green Man (see **Part V — APPENDIX**) now tends the plants and animals at Porpherio's behest. Two human adventurers — Hamish and Argus — managed to enter the garden, drank from the **Fountain All Heal** (see area G9) and so resolved to remain (see **Part IV — PALACE OF SPIRES** for a fuller description of these two NPCs).

Should the party indulge in combat in the garden there is a chance that the Green Man will appear. The chance of his

appearing is one in six if the party kills anything.

## SPECIAL NOTES FOR THE DUNGEON MASTER

As a general rule the garden inhabitants will not attack druids or non-evil elves unless attacked by them, though the various creatures will refrain from attacking certain other classes as detailed in the keys to the specific encounter areas. It is strongly recommended that the DM read the descriptions of the monsters in the **Monster Manual** and **FIEND FOLIO™** Tome with care so that he or she may play the garden denizens with the subtlety due to them.

It will quickly become apparent to the DM that this is no ordinary adventure. It is possible for a group of 1st level characters to wander gently through the garden and succeed where a bullying group of 6th level characters could well fail. Diplomacy and tact will win the day where violence and aggression will lose it.

Normally the DM would award experience points in relation to the number and type of monsters killed. It is strongly suggested that for this adventure experience points are awarded on a different basis. Success in an encounter with garden creatures may be judged as acquiring information or help without fighting and without antagonising the individual or group. In some cases (e.g. the firebrakes in area G7 or the unicorns in area G14) this will prove extremely difficult. After successful encounters (usually an encounter can be considered successful if the party leaves the monsters on friendly terms) players may be awarded experience points as if they had overcome the monster(s). Under no circumstances should experience be awarded for killing anything unless for some reason there is a party member who is evil, in which case the evil character(s) will receive rewards in the normal way. In making judgments, the DM should use his customary discretion, probably using as a yardstick the attitude of players during encounters.

The encounters in the **Entrance Caverns**, however, should be treated in the usual manner. The mud-men and poltergeists arrived after the death of Porpherio and can be considered as distinct from the inhabitants of his garden.

In summary — the whole scenario will be a sore temptation to many players to behave in an aggressive fashion — killing every monster in sight and taking their treasure. This kind of behaviour will yield them little in this adventure. There is no reason why the Dungeon Master should be overly concerned if a party attempts to ransack the garden since its guardians have many powers, in particular the Green Man's ability to render people insensible. This affords the opportunity to the garden inhabitants to strip the party of their weapons and eject them from the garden via room P13 in the **Palace of Spires**.

The DM may find the policing of good play of alignment one of his major tasks: for example, the fact that most of the treasure and magical items are the personal property of good creatures means that to remove them requires an act of theft. Lawful good characters should not tolerate that kind of behaviour, and neither should the Dungeon Master. In any case, the garden inhabitants would not tolerate it, and should they see the party carrying items they know full well belong to other garden inhabitants, they would not be slow in insisting upon the return of the items to their owners.

To conclude this introduction, the authors wish you well in running "**Beyond the Crystal Cave**" and they sincerely hope you have *fun* doing so. The adventure is designed to be both amusing and irritating to players, though simply amusing to the Dungeon Master. A last piece of advice — as is stated in encounter area G2: "Think like a leprechaun!"

## PART II — THE ENTRANCE CAVERNS (Areas C1 — C7)

### INTRODUCTION

Originally, caverns C1, C3, C4, C5 and C6 were the course of the river from the lake (area G17 — see **PART III — PORPHERIO'S GARDEN**) as it flowed underground from the hilltop garden above to the plain below. The caverns and tunnels were worn smooth by the torrent which once coursed through them.

This group of caverns emerges, on the south-west side, at the foot of the small hill on which the garden stands. The course of the river which once emerged from the caves has long since been obscured by the smoothing effects of time, but the caverns' entrance is by no means difficult to find. Any party circumnavigating the knoll will inevitably come across it.

Because of the nature of the enchantment which has slowed time in the garden, the flow of water through the caverns has become a mere trickle which reaches no further than cavern C4 (see cavern C6 for a full explanation of this effect).

While the floors of the caverns themselves are relatively level, the tunnels between them show a marked upward slope from C1 towards C6. These passageways are roughly circular in section and about 10 feet across. Numerous stalactites hang from the roof in many places.

There are no wandering monsters within the **Entrance Caverns**.

### ENCOUNTER AREAS

#### C1 EMPTY CAVERN

You have entered a natural cavern about 40 feet across and about 25 feet high in the centre. The floor is flat and very dusty with a few scraps of dry vegetation scattered about.

There are numerous tracks visible in the dust. Most are those of small animals, but a number of larger, human-like tracks form a clear path from the entrance to a dark exit to your right. Another exit, almost opposite, appears unfrequented.

The cavern seems to be unoccupied.

The cavern is indeed unoccupied. The small tracks are those of animals which occasionally inhabit the cave. The larger ones are those of the local, human inhabitants who sometimes go to the **Cave of Echoes** (C2) to seek aid or advice. If the party has persuaded a peasant to guide them here he will not willingly proceed beyond this cavern in the direction of cavern C3.

#### C2 CAVE OF ECHOES

On leaving cavern C1 in the direction of C2:

As you leave the dusty cave behind, the tunnel slopes upwards slightly and the floor becomes bare rock. You notice that your footsteps and any other sound you make, however small, echo back from the darkness ahead.

On entering cavern C2:

The floor of this cavern is flat and bare; the glassy-smooth, black walls rise vertically, forming a roughly vertical cylinder about 40 feet in diameter. The roof, if indeed this cavern has a roof, is lost in darkness, beyond the range of your vision. The cavern appears to be unoccupied.

Echoes here are even more intense than in the connecting tunnel. Sound continually returns to you, greatly magnified, after a gap of a second or so.

Inlaid in white in the smooth, black floor is the single word (in common) "ASK."

The magnification of echoes by this cavern is magical and means that any noise louder than quiet conversation (e.g. shouting, clapping) will result in an echo loud enough to deafen all characters within the cave for 1-8 rounds (no saving throw). The abnormally long delay between a sound and its echo is also due to this magic.

The roof of the cavern is some 80 feet above the floor and is glassy-smooth like the walls and floor.

This place is used by the simple local folk as an oracle and helper, and for these people the powerful sentient magic contained herein will often grant aid when asked to do so. Such aid might take the form of a spell (e.g. **cure disease**), a wise judgment, sage advice, a small quantity of much-needed money, etc. Its power and its compassion for the needy are almost unlimited. However, while receiving a request for aid it has the ability to look into the mind of the supplicant (without his or her knowledge) to test the true extent of need and also worthiness. In general, only deserving 0 level creatures of non-evil alignment will be helped; however characters who previously entered the garden and fell under the charm of the **Fountain All Heal** (G9) will be granted their wish to return to the garden should they have been removed from it by some exceptional means without the charm being removed. They will be teleported directly to the **Palace of Spires** (see **PART IV**).

For the purposes of the module, the DM should ensure that the party gains no effective aid from the cavern. Questions will be answered with important-sounding gibberish, and excessive demands with a deafening boom (deafens characters for 1-8 rounds, no saving throw). The magic of the cavern will have little time for a party of adventurers, being of the opinion that any problems they may have are the result of their own avarice and lack of humility!

Attempts to damage the cavern in any way, or persistent greedy demands will result in a bang loud enough to render those inside unconscious for 1-8 turns and deaf for 1-8 days (no saving throw). Characters in the connecting passage or the empty cavern (C1) are merely deafened for 1-8 turns (no saving throw).

The magic of the **Cave of Echoes** is a component of the enchantment which Porpherio laid on the garden before his death. Any attempts to interfere with it magically should be dealt with in the same way as attempts to break through the time-barrier around the garden by magical means (see the **GENERAL DESCRIPTION OF PORPHERIO'S GARDEN AND ITS MAGICAL PROPERTIES** in **PART I**, above). Physical means may damage the rock of the cave but will not affect the magic.

It was here that Orlando and Juliana came when fleeing from the wrath of their parents. Seeking aid from the magic of the cavern they were transported to the garden where they could live happily and safely. The cavern was able to sense that the presence of the couple would bring great happiness to the garden's inhabitants since the two would be taken as reincarnations of Caerwyn and Porpherio.



### C3 HAUNTED CAVERN

The floor of this cavern is smooth but undulating, and littered with fragments of stalactite. The roof, about 30 feet high, is covered with stalactites ranging in size from a few inches to several feet. Many of them seem to have snapped off at the root.

The cavern appears to be unoccupied.

The DM should do nothing to correct the possible misconception that the occupants are piercers. The cave is, however, the lair of two poltergeists (AC 10; MV 6"; HD ½; hp 3, 3; #AT nil; D nil; SA fear; SD Invisibility, Silver of magic weapons to hit). They will attack any characters entering the cave by throwing fragments of stalactite. The chance of hitting is the same as that for a 5 HD monster. If a character is hit he must save vs. Magic or be affected by **fear** and flee in panic in a random direction for 2-24 rounds before recovering. (For full details concerning the poltergeist see the **FIEND FOLIO™** Tome).

The direction in which the character flees should be determined at random from the four possible exits:

#### Direction

- 1 Down the tunnel into cavern C1 and thence into the countryside beyond.
- 2 Up the tunnel into cavern C4 and straight into the pool of the mud-men (see C4).
- 3 Along the tunnel to C3a (see below).
- 4 Along the tunnel to C3b (see below).

### C3a STALAGMITES AND STALACTITES

The tunnel to C3a slopes upwards a little and immediately

around the sharp bend it is almost entirely blocked by a forest into this area will strike these and hence suffer the equivalent of up to three attacks by a 3 HD monster as he attempts to force his way through in panic. Successful hits will cause 1-6 hit points of damage. Note that the fear of the poltergeist will be dispelled as soon as the character takes actual damage and so attacks will cease after the first hit. Ordinarily the tunnel can be negotiated safely, although with difficulty.

Lying in the tunnel, impaled on a stalagmite, is the skeleton of a fighter. His armour and sword are almost completely rusted away and the leather and cloth of his other gear completely rotted. The contents of his purse (3 pp, 22 gp, and a gem worth 150 gp) lie scattered on the floor beneath his bones. On a gold chain around his neck hangs a jewelled gold amulet. Its apparent value is 230 gp but it is actually magical and allows the wearer to **predict weather** (as the druidic spell when cast by a druid of 6th level) once per 24 hour period. The actual value of the amulet is 4,500 gp (1,000 xp).

### C3b OCHRE JELLY

The tunnel to C3b slopes gently downwards and becomes damp towards the far end where there is a small patch of ochre jelly (AC 8; MV 3"; HD 4; hp 9; #AT 1; D 2-8). This ochre jelly is clearly visible to characters entering the area normally but fleeing characters will encounter it unawares. While still suffering from **fear** a character cannot attack the jelly and will suffer one attack per round as he or she cowers at the far end of the tunnel. Any successful hit dispels the **fear** of the poltergeist and restores the character's freedom of action; however, until hit the character remains in a state of panic and will take one attack per round from the ochre jelly until hit, rescued or until the duration of the **fear** spell expires.

The souls of the poltergeists are bound to the main cavern and they will not leave it for any reason.

## C4 CAVE OF THE MUD-MEN

This natural cavern is large and irregular in shape. The bare rock floor forms a large depression which contains what appears to be a large pool of mud. Next to the pool on the side nearest you are two mounds of what looks like dried mud about 4 feet high and 3 feet across. The cavern appears to be unoccupied.

This cave is the lair of six mud-men (AC 10; MV 3"; HD 2; hp 9, 8, 7, 6, 6, 5; #AT nil; SA mud-throwing; SD need magical weapons to hit; D for full details see **Part V — APPENDIX**), who will attack anyone who steps into their pool of mud. The pool is about 1 foot deep and slows movement by 1". Since mud-men's attacks also slow movement, this effect of the mud pool is particularly important (see below).

Since the setting up of the time-barrier around the garden, the trickle of water from the **Crystal Cave** (C6) has reached only as far as the pool of mud in this cavern. Here the magical dweomer of the water has become concentrated and as a result magical creatures, the mud-men, have been formed. They have no purpose in life but they deeply resent the freedom of movement available to other creatures; the mud-men themselves move only slowly and cannot leave their pool.

In the round that any character steps into the pool all the mud-men will rise up from below the surface on the far side (where they tend to congregate near to the source of their magical sustenance). In the next round they will begin to move towards the character(s), hurling blobs of mud, until they are within melee range when they will quite literally hurl themselves instead! When there are no living characters within the pool the mud-men will subside back below the surface, rising again if it is re-entered. Note that the mud-men can only sense (and hence attack) creatures in contact with the mud of the pool.

The mud-men attack by hurling blobs of mud (range 6") or themselves (range 1") at opponents who are treated as AC 10 (modified by dexterity bonus). The mud hardens quickly on impact, slowly the victim's movement by 1" (blobs) or 4" (whole mud-men). The effects are cumulative, and when a character's movement is reduced to zero (note that the pool itself reduces movement by 1") he is unable to move or even wipe the mud from his face. Unable to breathe he will take 1-8 hit points of damage from suffocation in each subsequent round unless his mouth or nose is cleared of mud. The character will die of suffocation in five rounds in any event unless rescued.

The dried mud mounds contain the remains of two adventurers who fell victim to the mud-men but managed to drag themselves out of the mud before expiring. Their bodies, mummified by the dry mud, are fixed in semi-crawling stances. The mud may be chipped away from the bodies and if this is done the victims will be revealed as a fighter and a thief (both human).

The fighter is wearing chain-mail armour and the pack on his back contains a usual assortment of dungeon gear (torches, spikes, etc.). A purse on his belt holds 15 sp, 26 ep and 10 gp. Also on the belt is an empty scabbard.

The thief is wearing leather armour and his pack has similar contents to that of the fighter, plus a set of thief's tools. His scabbard is also empty. His belt pouch contains 15 sp, he is wearing a gold ring (value 30 gp) and a secret compartment in his right boot contains a gem worth 400 gp. Also on his belt is a small scabbard containing a **dagger +1**.

The desiccating effect of the dried mud has also mummified the equipment of these adventurers. As a result, only the metal objects (e.g. metal armour, buckles, thief's tools) are usable. The remainder (e.g. leather armour, belts) are dry, brittle and dusty. Their swords and the fighter's shield were dropped in the mud and have long-since rusted away.

## C5 TUNNEL WITH STREAM AND POOL

The tunnel now has a small stream a few inches wide running along the centre of its sloping floor. This stream has eroded a channel about 6 inches deep in the rock.

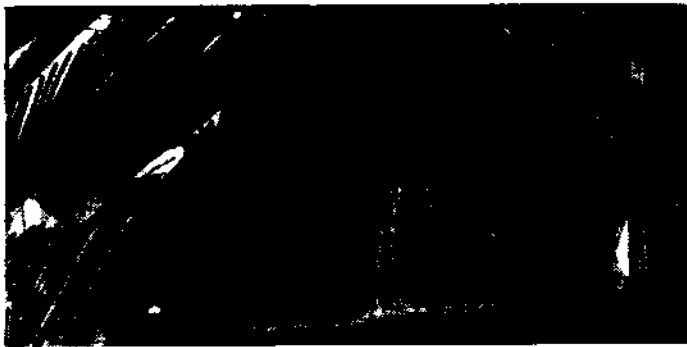
When the party reaches the wider part of the tunnel:

Here the tunnel widens slightly. An irregularity of the floor has caused the stream to form a shallow pool about 2 feet across. Amidst the gravel on the pool bottom are a few highly reflective stones.

Although the water in the pool will show a faint magical aura (if **detect magic** is cast), it has the same properties as ordinary water in all other respects. The water in the stream is spread too thinly to show an aura.

The bright stones in the pool are six uncut gems which have collected there over the years, having been brought down by the stream. Their values are 10 gp (x2), 15 gp, 20 gp, 25 gp and 40 gp. If competently cut their values will increase to 100 gp (x2), 150 gp, 200 gp, 250 gp and 400 gp respectively (see **DMG** p 30).





## C6 CRYSTAL CAVE

The scene before you can only be described as majestic. The slightest movements of the flames of your torches cause a myriad of multi-coloured points of light to dance across the walls and ceiling of this hemispherical cavern. Most of the floor of the cave is taken up by a clear pool fed by a broad waterfall on the far side. This waterfall is apparently quite motionless, each minute rivulet of crystal-clear water is perfectly suspended as if frozen, and gem-like droplets hang stationary in mid-air.

Music, almost heavenly in its quality, falls gently on your ears bringing forth memories and emotions (both happy and sad) which you thought were long forgotten.

The floor of this hemispherical cavern is bare rock but the walls and ceiling are completely encrusted with rock-crystals which are the cause of the reflected points of light.

The pool is the source of the stream which trickles down the tunnel. Near the waterfall it, too, appears to be quite stationary, and its surface is only in motion near the side where the stream departs.

The cavern appears to be unoccupied.

The waterfall and pool (which is about 8 inches deep) consist of water from the lake (G17) in the garden above. As it emerges at the top of the waterfall, the magic which slows time in the garden is still in effect, hence it falls very slowly indeed. Gradually, however, the magic diminishes and so as the water flows away from the waterfall it moves progressively faster.

At the end of the pool near the stream, where the magic has almost vanished, the water is quite fluid but it becomes increasingly viscous towards the waterfall. Near the falls the water has the consistency of semi-solid tar. It is possible to walk on the surface but it is wise to keep moving since a character's foot will sink to the bottom in about one round and take as long to extract, during which time the other foot will sink ...! The surface of the pool here is very sticky.

The waterfall itself feels as hard as steel if struck but slightly yielding (like the pool) if pushed against. Droplets like ball-bearings hang suspended in mid-air and the main flow of the falls is like a forest of transparent steel bars.

If observed closely the slow movement of the waterfall can be made out and a dark space (room C7) can be seen behind it. The water of the falls takes about 20 minutes to flow from top to bottom.

The success of any physical attempt to penetrate the water of the falls depends on its speed rather than the force applied. The faster an object (or character) attempts to pass into the water the harder it will appear. Firing arrows at it, striking it with weapons etc. will cause the objects concerned to break unless they save vs. Crushing Blow. Simply pushing against the waterfall will cause it to yield but the rate of progress will be

so slow that it would take about five rounds for a character to push his way through. During this time his feet would become firmly fixed in the pool and his body helplessly enmeshed in the water of the falls which, during that period, would slowly but inexorably press him down to the cavern floor and crush him flat. The DM should give hints to a character of his impending entrapment (which will become increasingly apparent as time progresses) in time for him to extract himself, if he has the sense to do so! The only spells, other than **dispel magic**, which will affect the waterfall (or pool) are the following, which are specifically concerned with water:

**destroy water** (the reverse of **create water**) will instantly produce a hole in the waterfall about 10 feet across and 10 feet high which will move downwards as the water falls and fill up over a period of five rounds.

**part water** or **lower water** will cause a gap to appear in the falls over a period of one turn. This gap will be 10 feet across by 10 feet high regardless of the level of the spell caster. The gap will persist for the duration of the spell (which is level dependent) and close during the five rounds after this.

**dispel magic** may be able to remove the **dweomer** of the water (in the same way as **potions** may be made useless). For the purposes of determining the success of the **dispel magic** the water's **dweomer** is treated as 20th level magic. If successful, the spell produces the same sort of gap as the **destroy water** except that the water from the hole falls away as would normal water, rather than being destroyed.

The pool and the waterfall will show a magical aura, becoming stronger towards the top of the waterfall, if **detect magic** is used.

If the spell users in the party have not learned the required spells it is possible for the party to camp safely in the **Crystal Cave** to allow the correct spells to be learned.

The music is magical in origin and will have no adverse effects on any character. The magic which produces it was laid by Porpherio to entertain those watching the falls and the **Crystal Cave** from the observation room (C7).

## C7 OBSERVATION ROOM

Behind the waterfall is a room carved into the rock. The floor, which is about 3 feet above the surface of the pool in the crystal cave, bears a mosaic consisting of a geometric pattern enclosing representations of birds, animals, fruits, and flowers. Lying on the floor are the collapsed remains of a long couch and a wooden table which have decayed with age. Also on the floor is a quantity of broken glass. The walls are bare rock but in the wall opposite is a decorated alcove. The room is unoccupied.

This underground chamber was once a cool haven for Caerwyn and Porpherio. Here they could observe the splendours of the **Crystal Cave** (illuminated by magical, moving lights) through the waterfall which, at that time, fell at a normal rate. The furnishings have since decayed and the glass decanter and glasses on the table have fallen to the floor and shattered.

If the alcove is examined:

The three sides of the alcove bear a fresco of a woodland scene which continues onto its floor and ceiling.

The alcove is a teleportation device which transports any object or creature entering it fully to the **Fairy Ring** at location G1 in the garden. At one time it was possible to teleport back into this alcove from the ring but this is no longer the case.

This concludes **Part II** of this module. On passing through the teleportation alcove the adventurers enter **Part III — PORPHERIO'S GARDEN**.

## PART III PORPHERIO'S GARDEN (Areas G1 — G19)

### INTRODUCTION

Except in very unusual circumstances, the party will enter the garden from area C7 and will appear in area G1. This is a one-way teleport device; the party may only leave the garden via area P13 described in **Part IV — THE PALACE OF SPIRES**.

The description of the enchanted garden is separated into 19 sections, each section referring to an area on the main map. The general descriptions of the woodland and grassland are left to the Dungeon Master. Many of the encounter areas and the monsters' lairs are hidden within the woods, and players would be alerted to their presence if the DM were suddenly to read out a formal passage of prepared text. Descriptive passages have been prepared for the DM to use as he or she wishes, once the players have discovered the particular lair.

As has been noted above in **Part I — INTRODUCTION**, a party will find it difficult not to become disoriented in the woods if they choose not to follow the paths. Whether they follow the paths or not they will find that encounters are almost inevitable. There is a 20% cumulative chance for each square on the map within a particular area that the party enter that they will encounter the inhabitants of the area. When a party enters a monster's lair (even if they are unaware of the fact, as they may be in the satyrs' lair (G5), for example) there is a different probability that the monsters will be there dependent on whether the party has already met them. If an encounter has already taken place then those creatures left alive will arrive in the lair in the round after the party arrives. If an encounter has not already taken place then there is a 40% chance that the occupants will be encountered in their lair or a 20% chance per round that they will appear. There are exceptions to these general rules which are detailed in the individual area descriptions.

### WANDERING MONSTERS

These wanderers have no lairs as such — what lairs they have can not be found. If followed they will not return to a lair. Wanderers appear on a roll of 1 on 1d6, they do not appear on the lawns. When an encounter with a wanderer is indicated, the monster concerned should be chosen at random from the following:

1. One giant porcupine (AC 5; MV 6"; HD 6; hp 34; #AT 1; D 2-8; SA shoot quills; SD quills).
2. One giant skunk (AC 7; MV 9"; HD 5; hp 30; #AT 1; D 1-6; SA/SD squirt musk). Particular attention should be paid to the need to spend time removing any odours from clothing.
3. Three male stags; one adult, two young adults (AC 7; MV 24"; HD 3; hp 19, 14, 12; #AT 1 or 2; D 2-8 or 1-3/1-3).
4. Two giant badgers, one male, one female (AC 4; MV 6" (3"); HD 3; hp 20, 15; #AT 3; D 1-3/1-3/1-6). Note that the pelt of the male is worth 25 gp and that of the female 20 gp.

For each of these creatures, check their detailed behaviour in the **AD&D Monster Manual**. If the party is in some way harming the garden or garden inhabitants when the encounter occurs the wanderer will always be hostile, otherwise there is a 50% chance that the wanderer will be hostile. None of these wandering monsters carries any treasure.

The Green Man is also a wandering monster. He will appear on a roll of 1 on 1d6 if the party kill anything.

### ENCOUNTER AREAS

#### G1 THE FAIRY RING.

The **Fairy Ring** is marked by a solid black circle on the garden map. If the party enter this area from another part of the garden

they will find the ring deserted but when, as they must, they first enter the ring from the teleport in the underground observation chamber (C7):

You suddenly find yourself standing in the middle of a 20-foot-diameter ring of large toadstools. The ring stands in a small grassy clearing in idyllic woodland. Seated on five of the larger toadstools are five diminutive figures with pointed hats, red cheeks and bright, cheerful clothing. They are grinning at you.

These creatures are leprechauns (AC 8; MV 15"; HD ½ + 1; hp 5, 4, 3, 3, 2; #AT 0; D 0) and they offer great scope for amusement to the DM. They are mischievous and fun loving and will use their abilities to become invisible, to create illusions, to throw their voices and to polymorph inanimate objects to confuse and annoy the party. If spoken to they will chant in unison and at random the following limericks, continuing until each rhyme has been recited at least once:

- (1) The river o'er yonder appearing  
Has five bridges (of which you are hearing).  
The problem we set,  
Is how do you get  
Across each and return to this clearing?
- (2) There's a fountain somewhere in this garden  
Whose waters, we hear, sometimes harden,  
But a drink now and then  
Cures all in our ken,  
And may even bring forth cries of "Pardon."
- (3) There's a lovely building just here  
With turrets and domes far and near.  
'Tis a shame you can't spy it  
As we urge you to try it.  
Solve the puzzle and see it appear!
- (4) Some may think that our maze is a pest  
But it shelters a haven of rest,  
And ere anyone leaves  
They must leave more that leaves  
And then honour our master's request.
- (5) There are leaves in the garden to trace  
and a maze with a clear central space  
with a leaf in your hand  
you could stand and stand  
but to leave, leave the leaves in their place
- (6) There was a young man from Sybar  
Who was stung on the nose by a wasp  
We said "Does it hurt?"  
He replied "Not at all,  
It can do it again if it likes."

The leprechauns are delighted to see new people to tease with their silly rhymes — the other garden inhabitants having long wearied of them. The first limerick refers to five bridges that connect the two islands formed by the **Endless River** (G3). It is impossible to cross each bridge once only and return to the same place, but the leprechauns don't make this a condition. No benefit accrues to a party that solves the riddle.

The second limerick refers to the **Fountain All Heal** (G9) and its wonderful properties.

The third hints at the presence of the **Palace of Spires** (see **Part IV**), and at the puzzle the adventurers have to solve — the maze (G19).

The fourth is a riddle which hints at how to operate the teleport mechanism in the maze.

The last limerick causes double the normal gales of laughter that follow each recital. It is, of course, meaningless, but a party might be misled into trying to solve it and relate it to something in the garden. The DM should not reveal the non-sensical nature of this rhyme but should allow the party to explore any meanings they may read into it.

The **Fairy Ring** is within area G2 but the party will not encounter the leprechauns again unless they enter the lair or until they re-enter area G2. They will not meet them again in the **Fairy Ring** under any circumstances. If attacked, the leprechauns will disappear and flee, only to return later (see area G2 for the leprechauns' tactics).

### G2 THE LEPRECHAUN WOODS

A lovely place with many trees (ash, elm, beech, willow, linden and birch), flowering shrubs and many delightful plants and small animals.

Five leprechauns live in this area (AC 8; MV 15"; HD ½ +1; hp 5, 4, 3, 3, 2; #AT 0; D 0). These leprechauns will have been encountered at G1 when the party entered the garden. When subsequently wandering through the woods there is the normal chance of an encounter occurring, 20% cumulative per square entered. If one does, the leprechauns will tease the party by appearing and disappearing, attempting to steal objects, polymorphing characters' possessions into ridiculous items (for example changing a long sword into a stuffed toy animal) and generally being as obnoxious as possible. If questioned or spoken to they will chant their limericks and disappear in fits of giggles only to return a turn or two later on their pestilential business. The DM should not underplay these creatures or their polymorph ability, nor should he forget the possibility of their becoming indiscreet if plied with wine. Think like a leprechaun!



Their lair is at the point shown in area G2 on the map (and is located inside a hollow tree of immense proportions). There is the normal chance of their appearing whilst the party investigate it. This is the only oak in this area, but the DM should not reveal the species or its scarcity unless asked. The entrance is at the base of the tree and is a small wooden door 3 feet high and 1 foot wide. Unfortunately for the party it is disguised by an illusion to appear as part of the tree's natural, outer bark and will require a **detect illusion** or **dispel illusion** to be revealed. Only halflings, gnomes and dwarves may enter here normally.

The leprechauns' lair is not illustrated as it simply consists of two circular rooms, each about 6 feet across. They are cut into the interior of the tree, one above the other and are connected by a spiral wooden staircase running around the wall on the inside.

About 10 feet up the tree, a knot hole which is 6 inches in diameter is visible and anyone looking through this knot hole will see below them the leprechauns' sleeping quarters. There is what appears to be a hornets' nest hanging from a branch directly beside this knot hole, complete with angry looking hornets buzzing around. This is another illusion which is really a leather sack hanging from the branch by a strap. True to the leprechauns' sense of humour the pouch contains nothing of value but when opened will seem to be brimming with gems and jewelry. The DM can amuse him or herself by describing huge emeralds and powerful magical items — in fact these are worthless chunks of crystal and cheap non-magical items enchanted to appear valuable. The enchantment will persist only until the party leave the garden.

If the party gain access to the lower room of the leprechauns' lair, read the following to the players:

This is a circular room with wooden furnishings. A spiral staircase leads up beside one wall and disappears through a hole in the ceiling. In the centre of the floor is a table surrounded by five chairs. On the walls are two cupboards. The table bears eating utensils and bowls with food in them. Above the table a cage of fireflies hangs from the ceiling, illuminating the room.

The cupboards contain simple eating implements, and the foodstuffs are nutritious and wholesome. Under the table is a secret trap-door (detectable as normal if specifically looked for). If found it will reveal an underground passageway descending for 10 feet before heading north. If appears blocked by humanoid skeletons and rubble. This is another illusion but if any attempt is made to enter it will be revealed as an empty 6-foot-deep pit. A little digging at the bottom of this pit will unearth a leather sack in which are five gem-like stones. These are **loun stones** (see **DMG** p 147): two are dull grey and spent; one is pink, green and spherical; one is pearly white and spindle shaped and the last is lavender and ellipsoidal. They are fully effective in the garden and outside it. Further scrabbling will reveal a small pot with a lid, which contains 365 gp. This is the leprechauns' crock of gold! Stealing it will cause the leprechauns to become malicious in their dealings with the party.

If the party enter the upper room or look into it through the knot-hole, read the following:

This circular room appears to be a bedroom. It contains five untidy and unmade beds, each with a wooden locker at the foot. The beds are arranged radially against the walls.

None of the lockers is locked or trapped and each contains an untidy jumble of clothes and blankets. At the bottom of one (choose at random) is a **horn of bubbles**.

### G3 THE ENDLESS RIVER

This river is shown on the garden map as a thick wavy line; note that it crosses a number of other encounter areas. This is a magical river created by Porpherio for the amusement of garden inhabitants. It is uniformly 8 feet deep and populated by highly coloured fishes and fresh-water plants. The current is not swift nor is it constant. If characters choose to identify the direction of flow at any point it will go from left to right or from right to left at random. (Use a die, quietly, to determine the direction). It is quite possible for the river to flow in opposite directions at different places. The direction of flow at any given point is of no importance whatever; this is simply another entertaining feature of the garden and may confuse those players who need to see a meaning in everything.

Living in a cave in the pool formed by the river is a solitary yu lung (AC 3; MV 6"/18"; HD 5; hp 31; #AT 3; D 1-4/1-4/2-16). The yu lung is described in the **FIEND FOLIO™** Tome under dragon, oriental. This shy creature browses throughout the

length of the **Endless River** and rarely emerges onto the land. If attacked he will flee to his underwater cave. If attacked there he will defend himself, but will not pursue. He has no treasure.

There is a 5% chance that the party will see the yu lung each time they cross, or come to, the river. If the party follows the river bank, the chance of seeing the creature will increase at the rate of five per cent per turn. Thus, during the sixth turn spent following the river there will be a 30% chance of encountering him.

#### G4 THE DRYADS' WOODS

Ash, elm, birch, flowering shrubs and grass are the dominant flora here. The fauna is as varied and colourful as other woodland areas.

Two dryads (AC 9; MV 12"; HD 2; hp 13, 10; #AT 1; D 1-4 (dagger); SA **charm**) live in this area, each with her own oak tree, at the points marked 'X' and 'Y' in area G4 on the map. Dryads can use a **dimension door** to escape to their lair unless surprised. Both of the dryads will be hostile to intruders, but their attacks will be limited to attempts to **charm** party members either to drink from the **Fountain All Heal** (G9) or (if males of charisma greater than 14) to live with the dryad. If a male character is **charmed** to live with the dryad he will escape the enchantment in one to four years. This is one to four years in the garden which is 720-2880 years outside the garden. Encounter with one dryad will not preclude encounter with the other, but they will not be encountered together.

Both live in oak trees of truly immense size. Entrance to each can only be effected by invitation from the dryad or by the use of the appropriate magic, (**plant door, pass plant, transport via plant, dimension door, passwall, phase door**, etc.) or by main force as there is no normal door into either home. The use of force to do damage to the trees will upset the Green Man who will appear immediately to stay the action. Both dryad homes are two circular rooms 12 feet in diameter and 10 feet high set one above the other and connected by stairs.

#### First dryad's lair

The tree at point 'X' is the 13 hit point dryad's home. Read the following if the party gain access to the **lower room**:

In the centre of this room is a circular wooden table with a wood chair set against it. On the table is a wooden bowl containing apples, pears and grapes. Light is provided by a small cage of fireflies suspended by a short chain from the ceiling. A cloth upholstered armchair is set against the wall and beside it is a spinning wheel with several hanks of wool across it. Opposite the spinning wheel is a cupboard set into the wall. Beneath the cupboard are two small casks, one with a small dipper beside it.

The cupboard holds crockery and cutlery. The cask with the dipper is full of water and the other contains mead.

The following is a description of the **upper room**:

This room contains a bed, a chest and a cupboard. The bed is against the wall opposite the stair head and the chest is at its foot.

In the cupboard are a red cloak, a green cloak and a pair of boots. These are **boots of elvenkind** but the cloaks are normal. If the cloaks are disturbed, a small iron casket will be revealed. It is locked but not trapped and contains 4 gems (50 gp, 85 gp, 250 gp, 500 gp).

If discovered at home this dryad will be found seated at her spinning wheel, working. She carries no treasure, but wears the key to her casket around her waist.

#### Second dryad's lair

The tree at point 'Y' is the home of the 10 hp dryad.

#### lower room:

This room is illuminated by a small cage of fireflies hanging from the ceiling. Under the cage, in the centre of the room, are a table and chair. The table bears a wooden bowl full of fruits and a stoneware jug. Wooden shelves are set into the wall and hold cutlery and platters. Beneath the shelves stand a small cask and a larger one. Beside these are a wooden bin, a small sack and a wooden box.

The jug is half full of wine, the casks contain wine and water respectively, and the wooden bin, sack and box contain apples, raisins and figs respectively. The room is wholly unremarkable with the exception that the fireflies' cage has a false bottom (detect as a secret door) in which is the key that opens the dryad's treasure chest.

#### upper room:

As you enter this room you see a bed and a chest of drawers. Across the bed is a folded yellow cloak.

The drawers are full of clothing, and the cloak is a **cloak of elvenkind** (human sized). Hidden at the rear of the third drawer, behind sundry clothing, is a roll of red cloth. Wrapped inside it is a small iron casket. The casket is locked and trapped with a poison needle (save vs. Poison or sleep for 4-16 hours). The box contains a soft leather pouch. Within the pouch are 25 thin ivory plates which can easily be felt through the leather. When examined the plates can be seen to be covered with glyphs and strange characters. Despite its resemblance to a **deck of many things** this is a peculiar pack of playing cards used by the dryad in complicated games of patience (solitaire). The value of this pack is 50 gp.

#### G5 SATYRS' WOOD

This is normal wooded parkland with many trees, flowering shrubs, short grass, birds, bees, butterflies and other mundane but beautiful flora and fauna.

Four satyrs live in this area (AC 5; MV 18"; HD 5; hp 33, 26, 26, 19; #AT 1; D 2-8). The 33 hp satyr has a set of magic pipes which can play to **charm, sleep** or cause **fear**. Characters who hear the pipes being played must save vs. Magic to avoid the effects. Those who fail their save will be randomly affected by the pipes as follows — roll a d6: 1, 2 will be **charmed**; 3, 4 will be **sleep** and 5, 6 will suffer **fear**. The range of the pipes is 60 feet and they can only be used by a satyr. This same satyr also wears a key on a fine chain around his neck, which will unlock the wooden box hidden in the lair. The other satyrs have no particular possessions or skills.

Their lair is located at the point marked in area G5 on the map. It is a small clearing surrounded by flowering shrubs in the centre of which stands a large elm tree. There are four separate heaps of dried grass under various of the flowering shrubs that encircle this glade. If the party goes over to look they will see that on the top of one is a dagger in a scabbard, lying beside another is a javelin whilst beside each of the other two is an earthenware mug. Beside the elm tree in the centre of the glade is a cask and on top of the cask are two more earthenware mugs.

The small heaps of grass are the satyrs' beds. Everything is as it seems and the cask contains good quality wine. If surprised (1 in 6 chance only) in their lair the satyrs will be found seated in a circle round the wine cask; three will be drinking while the fourth is quietly playing on his pipes. If not surprised they will conceal themselves in the shrubbery (90% undetectable) using the pipes in preparation for an ambush of the party. They will be extremely hostile to all intruders though they will refrain from physically attacking druids and wood elves unless they attack them first in some manner. They will always attempt to charm away beautiful female party members (characters with 15+ charisma).



The satyrs are not carrying any treasure on their persons as it is all hidden in a cavity among the roots of the elm tree in their glade (detect as a concealed portal). It consists of a leather sack containing 400 gp and a wooden box which is locked and trapped with a **snare** spell (the **snare** is attached to a branch of the tree). This box contains three gems (100 gp, 50 gp, 25 gp) and three phials. The phials contain the potions **diminution** (one dose), **animal control** (mammals and marsupials — one dose) and **water breathing** (two doses). There is also a set of wooden **pipes of the sewer**. Note that there are very few rats in the garden and those that there are will not obey the pipes. The pipes operate normally outside the garden.

#### G6 CAVE OF THE FROGS

The stream from the lake (G17) flows part way into the ravine before disappearing into a cave under the ravine's southern face. If the adventurers look into the cave:

The entrance is about 4 feet wide and 5 feet high and opens out almost immediately into a dank natural cavern 30 feet long, 20 feet wide and 10 feet high. The floor is 4 feet below the surrounding ground level. The stream winds across the floor before disappearing into a narrow fissure at the far end. Lodged in the fissure you can see a brightly painted shield.

Squatting towards the rear of the cave are two large, frog-like creatures.

From the cavern the water passes through a maze of underground tunnels and cracks and emerges to form the waterfall in C6 (the **Crystal Cave**). Characters will not be able to follow the course of the stream through the rock.

This grotto is the home of a pair of giant frogs (AC 7; MC 3"/9" (leap 14"); HD 2; hp 9, 7; #AT 1; D 1-6; SA tongue). They are not aggressive but will attack if they feel threatened (e.g. if a character proceeds more than 10 feet into the cave without explaining his peaceful intentions by use of **Speak with Animals** or similar means).

The shield lodged in the fissure is a **shield -1, missile attractor**. It was washed down from the lake where it was lost by an adventurer in the past. It has not suffered any decay from the water.

The frogs have no treasure and the cave contains nothing of interest to a party of adventurers apart from the shield.

#### G7 THE FIREDRAKES

Between the edge of the woods and a rocky outcrop adjacent to the time-barrier, there is a clear area of grass bespeckled with flowers.

A small ravine, about 20 feet wide, penetrates northwards into the outcrop. Its sides rise nearly vertically to a height of about 30 feet. The floor of the ravine and the ground within 50 feet or so of its mouth are bare of vegetation.

After running north for 100 feet, the ravine makes a sharp turn eastwards and ends after a further 30 feet at a roughly circular cave mouth about 15 feet across.

If the party enter the cave mouth, read the following to them:

The cave beyond is irregular in plan (although roughly circular) and about 50 feet across at its widest point. The air inside is hot and dry, and the floor very dusty.

To your right are two winged, lizard-like creatures, approximately man-sized. Behind them is what appears to be a shallow alcove.

This is the lair of a pair of firedrakes (AC 5; MV 6"/18"; HD 4; hp 25, 18; #AT 1; D 2-8; SA breath) who will always and only be encountered here. Full details of the firedrake are given in the

**FIEND FOLIO™** Tome. They are bad-tempered but are tolerated by the other garden inhabitants who have developed a habit of calling out to warn the firedrakes of their approach when they make an occasional visit. If garden inhabitants call out to the firedrakes on entering the ravine there is a 20% chance that they will be told to go away. Otherwise they will be invited to enter and will not be attacked. Characters who have fallen under the spell of the **Fountain All Heal** (see G9) count as garden inhabitants in such cases. Others who call out have only a 50% chance of being invited in (and thus being safe from attack). Uninvited callers stand a 70% chance of being attacked by the firedrakes immediately when they enter the cave. In any event, the firedrakes will always fight if they believe themselves or their eggs (see below) to be threatened.

In the recess behind the firedrakes is a small pile of sand (about 2 feet high). The outside of the pile is warm to the touch. The sand becomes warmer towards the centre where it is burning hot. Hidden there are two eggs (about 6 inches long) which the firedrakes have been incubating by the occasional blast of fire-breath. Once uncovered, the eggs will cool rapidly and the young inside will die within one turn unless covered over again. If kept hot, the eggs will hatch after 11-16 (1d6+10) days. With care it is possible (DM's discretion) that the young might be successfully reared as pets. They are 1 HD monsters when first hatched and gain one hit die per year becoming fully adult after three years, when they also gain the ability to breathe fire. When it reaches adulthood, however, there is a 50% chance that a firedrake will abandon its master in order to seek a mate, no matter how well it has been treated.

Also hidden in the pile of sand are three gems (worth 40 gp, 50 gp and 120 gp) which are very hot! (One point of damage is caused by each gem picked up by an ungloved hand unless it is allowed to cool first).

#### G8 THE BEARS

Three black bears, two adults (AC 7; MV 12"; HD 3+3; hp 21, 16; #AT 3; D 1-3/1-3/1-6; SA hug) and their cub (AC 7; MV 12"; HD 2; hp 7; #AT 3; D 1/1-1-4; SA hug) live in a cave at the end of a rocky outcrop that also houses the firedrakes (area G7). Their territory includes some open grassland and some typical garden woods. These animals will be encountered only in their lair. They will not attack the party unless attacked first or unless the party attempts to enter their cave. If combat occurs the cub will try to hide and will only fight if cornered. Once roused the bears will pursue adversaries to the boundary of their territory. Note that although the bears will not normally go beyond this point, if the party are foolish enough to torment or tease them they will not need much prompting to pursue the party further.

If the party gain access to the bears' cave:

The cave is dry and dusty and about 30 feet long, 20 feet wide and 10 feet high. At the far end is a pile of straw and other vegetation. On the floor are the bones of small animals and fish.

The bears use the straw as a bed. There are no items of value or interest to the party here.

#### G9 THE FOUNTAIN ALL HEAL

This fountain is a natural spring bubbling up from the centre of a rock basin about 4 feet in diameter and 3 feet deep which, as it overflows, forms a stream which eventually runs into the lake (area G17). This stream is about 1 foot wide and 6 inches deep; it meanders across the garden and constitutes no barrier to traffic. The fountain is on the borders of woodland but is in the open and easily seen. As the party approaches it they will note a small animal drinking from the fountain which will scurry rapidly away at their approach. The water from the fountain is crystal clear, cool and clean. Around the rim of the basin written

in the common language and imprinted in letters of gold are the words "Fountain All Heal". This basin is decorated by a naturally growing dog-rose.

The waters of the fountain are highly magical and when drunk from the rock basin will cure any and all ills and disorders: physical, mental, emotional, spiritual and magical except for death, alignment change and its own enchantment. A single draught will restore all lost hit points, ability points, experience levels and memory; it will neutralise poison, cure all diseases, exorcise evil spirits and dispel the effects of **confusion**, **charm** and **hypnosis**. It must, however, be drunk directly from the rock basin for it loses its special virtue the moment it overflows into the stream. Therefore it cannot be bottled and carried away as its magical properties are completely lost. Party members may drink from this fountain as often as they wish and each time experience any and all of its benefits.

As with most powerful effects the DM may find the unscrupulous player trying to benefit unfairly from the experience. For example, the fountain will restore lost levels of experience — the DM should be wary of allowing spurious claims.

There is, of course, a counterpart to the fountain's benefits. Each time the adventurers take a drink they must make a saving throw vs. Magic or become permanently enchanted with the garden and refuse to leave it. This saving throw should be made discreetly by the DM so as not to alert party members to their danger. If any character fails to save, he/she will wander away from the main party looking for some part of the garden where she or he can settle down as one of its guardian inhabitants. From the point of failing the saving throw onward the character will behave like any other garden inhabitant and will side with them against the party. *Nothing can remove this desire or dispel this magic except for a full wish.* Any character so enchanted will resist any attempts by the other players to prevent him or her from leaving the party. If the character is forcibly removed from the garden whilst still enchanted he or she will (until the enchantment is removed) seek to escape and return to the garden. Note that such removal would have to be by exceptional means, since characters enchanted by the fountain do not automatically leave with the rest of the party after entering the tomb of Caerwyn and Porpherio (P13). Any **wish** to remove the fountain's effect must be made by another party member on the character's behalf.

The importance of the effects of the fountain's water cannot be emphasized too strongly. An affected character becomes as one with the garden and the Dungeon Master can encourage good role-playing by explaining to any players concerned that their characters' one desire is now to dwell forever in this haven of peace and to assist garden inhabitants in any conflicts with the rest of the party.



#### G10 PIXIES' WOOD

Among the many trees (ash, elm, birch, walnut, yew and beech) are flowering shrubs, close-cropped grass and many small, harmless woodland creatures.

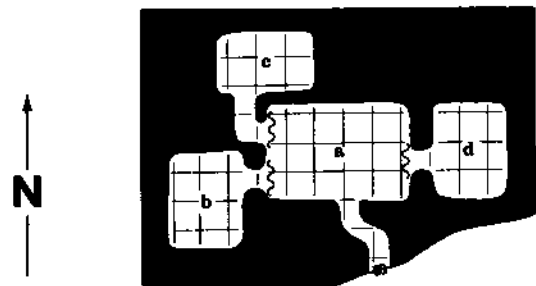
Three pixies live in this area (AC 5; MV 6"/12"; HD 1/2; hp 3, 3, 2; #AT 1; D by weapon type). The pixies, wherever encountered, will be invisible; they will be extremely hostile to all intruders though they will refrain from physically attacking druids, gnomes and halflings unless attacked by them first. They are armed with small swords and bows which are +4 to hit and fire three arrow types.

- 1: the War Arrow which does 2-5 hit points of damage.
- 2: the Sleep Arrow which causes sleep for 1-6 hours (save vs. Magic allowed);
- 3: the Arrow of Forgetfulness which causes permanent memory loss (save vs. Magic allowed). The restoration of memory can only be achieved by the clerical spell **exorcise** or a draught from the **Fountain All Heal**.

Each pixie has three arrows of each type and will use them at random. Due to the pixies' invisibility they are -4 to hit. They can make themselves visible at will and can polymorph at will. The DM is advised to read the pixie description in the AD&D **Monster Manual** with care as pixies have a range of powers which they will use to confuse, delay and upset the party as much as possible. Bear in mind their high intelligence.

Their lair is located at the point marked by an open circle in area G10 on the map. This lair is underground and rather like a badger's burrow. Entrance to it is at the bottom of a bank of earth on the top of which stands a broken, stone column which is entwined with ivy. The entrance is a small, wooden door 3 feet high and 1 foot wide, but this has been concealed by an illusion which causes it to appear as part of the earth bank. **Dispel illusion** or **dispel magic** are needed to make the door appear.

### THE PIXIE'S LAIR (G 10)



The floors, walls and ceiling are all of simple rammed earth. All chambers and passageways are 3 feet high and 1 foot wide (unencumbered halflings, dwarves and gnomes may enter the lair at half speed). There are no interior doors but the chambers in the lair are partitioned by hanging curtains.

In the centre of this chamber is a small wooden table with four tiny chairs set around it. On the table is a wooden bowl containing mixed fruit and nuts, an earthenware ewer half full of a milky fluid, and a stoneware pot. Against the wall near the passage leading outside is a small wooden cupboard; against the opposite wall is a bench with a chess set upon it.

#### Room a

The milky fluid is indeed milk, the stoneware pot is half full of honey and the wooden cupboard holds crockery. Under the bench is a young badger (AC 4; MV 6"/3"); HD 1; hp 4; #AT 3; D 1/1/1). This badger will growl and bark but will only fight in self defense if cornered. If attacked it will try to run away and hide.

### Rooms b, c and d

The three bedrooms are all very similar and the following description will suffice for all three, except that the wooden locker in **room c** will be visible from the door and should be included in the description (note that the key to this locker is kept in the belt pouch of its owner — the 2 hit point pixie):

This is a simple room containing a bed and a wooden cupboard.

Within the cupboard in the first bedroom (**room b**) amongst the pixie clothing, is an iron box which is locked but not trapped. It contains a potion of **clairvoyance** in a glass phial (1 dose), a gem worth 500 gp and 50 gp in a leather pouch.

The second bedroom (**room c**) is similar to the first, with a bed and a clothes cupboard. There is a wooden locker under the bed. It is locked and untrapped and contains three pixie arrows. Each is a **sleep** arrow. If handled carefully they will present no danger to party members, but if a character treats them casually he or she must make a dexterity check. Failure to make a roll of 3d6 equal to or less than dexterity will result in the character being scratched by the extremely sharp barbs on the arrows. If scratched the character must save vs. Magic of **sleep** for 1-6 hours.

The third bedroom (**room d**) is again furnished with a bed and a clothes cupboard. Within the clothes cupboard and buried beneath a heap of clothes is a wooden box. It is locked, untrapped and empty. A false bottom in the cupboard conceals a small opening which contains a **pearl of power**. The pearl is set into a gold ring (apparent value 250 gp) and operates as a normal **pearl of power** (recalling second level spells) see **DMG** p 151).

### G11 THE BARKBURRS' GROVE

The path through the woods bisects a grove of gnarled oaks. There are 19 of these trees scattered within a roughly circular area about 100 feet across. Mistletoe, in varying amounts, can be seen growing from each of the trees.

Near the centre of the grove a large, especially gnarled oak overhangs the path. Protruding from the roots of this tree there is a sheathed sword with a gem encrusted hilt.

This tree is the lair of two barkburrs (AC 0/8; MV ½" or leap 20 feet; HD 3; hp 15, 12; #AT 1; D 1; SA lignification — see **Part V** — **APPENDIX** for full details) which closely resemble the ordinary burrs which are common on this and other trees in the garden. Only druids and rangers have any chance of recognising the barkburrs for what they are (4% plus 1% per level).

The barkburrs are very sensitive to evil alignments and can also detect actions which are contrary to the interests of the garden and/or its inhabitants. They will attack any creatures coming within 20 feet who have performed such actions anywhere within the garden or whose alignments include an evil component. Note that while wanton damage to the garden would provoke an attack, simply gathering the plants needed to operate the teleport mechanism in the maze (G19) would not. If more than two characters who would qualify for attack by the barkburrs enter the range of their attack at about the same time the DM should decide which two are actually to be attacked first according to the following criteria: harmful acts are more abhorrent to the barkburrs than an evil alignment, and attacks on creatures produce more resentment than damage to plants.

The sword in the tree's roots is a **long sword +1** with the following additional characteristics; intelligence 14, alignment neutral evil, **detect good** in a 1" radius, ego 2, personality 16.

Each of the trees is the lignified form of a hostile adventurer who fell foul of the barkburrs. Hanging from a high branch of the northernmost oak is a black-opal pendant on a gold chain (value 1,250 gp). This is not clearly visible from the ground (characters specifically looking up into the branches of the

trees have the same chance of noticing it as they have of detecting secret doors). If the tree is climbed the chance of finding the pendant is 50%.

Although most of the gear belonging to the lignified adventurers has either been picked up by the garden inhabitants (who, understandably, left the sword well alone) or absorbed into the substance of the trees (see the specifications of the barkburr in the appendix) the gems and precious metals carried by the adventurers remain encapsulated by the wood. If the party can devise a means of effectively recovering this treasure they will find 1-100 gp worth of assorted coins and gems in each tree (except the large oak on which the barkburrs were lurking, this being a natural tree). Note that although the oaks were originally hostile adventurers they are now regarded as normal members of the garden's flora. Hence damaging them to extract the treasure would be considered a hostile act.

### G12 THE TREANT'S LAIR

This is in an apparently natural limestone ravine. What flow of water created this hollow is unclear since the stream from the lake (G17) flows only as far as the cave of frogs (G6). The ravine is surrounded by typical garden woodland. There are trees, shrubs and creeper plants growing within the valley which completely obscure the entrance to the cave which is the treant's home (marked by an open circle in area G12). The cave may be detected as a concealed portal.

The treant who lives here (AC 0; MV 12"; HD 7; hp 45; #AT 2; D 2-16/2-16; SA cause tree to attack as treant; SD never surprised) regards the entire garden as his own and rarely leaves his home, as he prefers his own company and that of his plants to others'. He zealously gardens his ravine, and there is a sense of friendly rivalry between him and the Green Man with regard to gardening skills. Of course the Green Man could win a serious argument but he does nothing to upset his curmudgeonly but kind friend, the treant.

When the party enter his area the treant will immediately become aware of them and will observe their progress. If they come near his cave of damage any of the plant life he will approach and ask them to leave. He will only attack if they refuse his requests or if they attack him. He will not normally pursue the party outside his area.

Upon entering the treant's cave:

Inside this cool, dark cave are large table, a stool and many huge gardening implements. At the rear is a damp patch of broken soil. The walls are decorated by vines and creepers.

The damp area is where the treant stands to rest and contemplate. The stool is not used by the treant but is provided for the comfort of the Green Man, his most frequent visitor. Within the cave's wall, immediately behind this rest area, is a cavity concealed by overhanging creepers (detect automatically if looked for). Inside this cavity is a leather sack containing 6 gems (values 100 gp (x4), 750 gp and 1,000 gp). There is also an iron box, unlocked and untrapped, which has in it four phials containing the following potions — **extra healing** (one dose), **sweet water** (one dose) and **plant control** (two doses). The DM should bear in mind that all plant effective spells (not specifically excluded in the introduction) and potions will work on the treant if he fails his saving throw, where one is permitted.

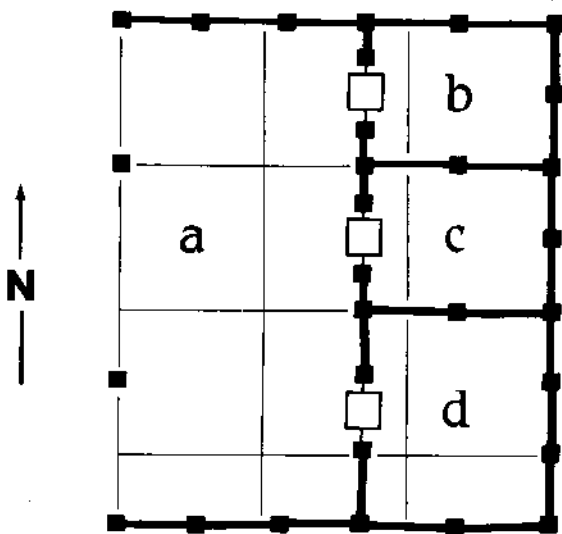
### G13 CENTAURS' MEADOW

This is an area of short grass and wild flowers. Four centaurs live here, two parents and their children. One child is female and the other male making two males (AC 5; MV 18"; HD 4; hp 27, 22; #AT 2 plus weapon; D 1-6/1-6 plus weapon type) and two females (AC 5; MV 18"; HD 3; hp 20, 15; #AT 2; D 1-6/1-6)

in all. The male adult is armed with lance and shield, the lance will do 1-8 or 2-24 points of damage (depending on whether the opponent is medium-sized or large) and the shield will make him AC 4 from the front. The young male is armed with a composite bow and has 12 arrows in a quiver slung across his shoulders. Each centaur wears a small item of personal jewellery: the adult male a gold neck torque (75 gp), the adult female a gold armband (50 gp), the young male a gold ring (20 gp) and the young female a fine gold chain around her neck (25 gp).

The centaur's area also includes a small patch of woodland in which there is a low wooden structure with a thatched roof. It is single storey and 14 feet high from ground level to the centre ridge pole. The walls consist of wooden uprights with horizontal boards between them. The west side is completely open, with wooden columns which support the roof. Inside, all floor areas are of rammed earth covered with clean straw.

### THE CENTAUR'S LAIR (G 13)



#### Area a: the open area of the centaur's lair

This is a common living room and has in its centre a large trestle table, on which is set the centaur's eating equipment and a variety of fruits and nuts. There is a jug on the floor at one end of the table. Where there is room against the walls stand a series of casks and tubs.

One cask and the jug beside the table contain ale, and both are about two thirds full. The others have oats and other foodstuffs. Stuck under the base of the ale cask with wax is the key to the treasure chest in **room d**. There is nothing else of monetary value in this room.

#### Areas b, c, d: the bedrooms

The other rooms are sleeping quarters and are filled with the expected kinds of furniture. The following general description should suffice for all three:

This room contains a straw mattress on the ground against the north wall and a wooden locker against the south wall.

In the young female's room (**room b**) the locker is unlocked and untrapped and holds a curry comb and brush, six brightly coloured ribbons, four ornamental horse brasses, a bag of powdered chalk and an old rag humanoid doll.

In the young male's quarters (**room c**) the locker is unlocked and untrapped and contains a curry comb and brush, several leather straps, a leather ball, a dagger in its scabbard and a brightly coloured woollen blanket.

The two adults share the same room (**room d**) and consequently their straw mattress is double sized and there are two lockers. The male's locker contains a curry comb and brush, several leather straps and belts, a plain woollen blanket and a long sword. The female's locker has six lengths of gaily coloured ribbon, a bag of powdered chalk, a curry comb and brush and a neckerchief. Neither of these lockers is trapped or locked. Thrust into the straw roofing above the bed is an iron chest. This is the chest unlocked by the key beneath the ale cask, and is hard to see (same chance as detecting a concealed portal).

The chest is locked and magically trapped. The trap will operate even if the key is used to open the chest, unless the command word ("straw withdraw") is used. The trap acts as an **entangle** spell which causes the thatch of the roof to hold fast any character attempting to move or open the chest unless he makes a saving throw vs. Magic. **Entangled** characters may be cut free (a process requiring 10-15 rounds) or released by use of the command word which is known only to the adult male centaur. Burning the straw is not possible as no flame will burn in the garden. The contents of the chest are a leather bag (holding 500 gp), a linen cloth wrapped around two gems (500 gp and 250 gp), and a padded box which holds two glass phials; containing potions of **Invisibility** and **speed**. Each phial contains enough potion for just one dose.

### G14 THE UNICORNS' MEADOW

This is an area of open grass meadow which encloses the maze (G19) and the two rose arbours (G15 and G16). It is occupied by two unicorns — a male and a female (AC 2; MV 24"; HD 4+4; hp 30, 24; #AT 3; D 1-6/1-6/1-12; SA charge for D 2-24). When the party first enter the meadow the unicorns will be in the maze.

These unicorns are aggressive, alert and intelligent; they cannot be surprised and will always know within two turns when party members enter their area. They will attack any intruders on sight, trying to make the first attack from the rear and surprising the party on a roll of 1-3 on 1d6. They will not attack rangers or paladins, or human, half-elf or elf maids of good alignment and pure heart unless they are attacked by these types first. There is the usual chance (25%) that aforementioned maidens will befriend the unicorns if they attempt so to do. Even if befriended, the unicorns will still not assist the party, go with them or leave the garden, as their devotion to Porpherio and Caerwyn is absolute. What constitutes pureness of heart is a matter for the consciences of the player and the DM.

Both unicorns are milk white with silver manes and tails, their hooves are of the appearance of mother-of-pearl. Around its neck each wears a pearl-encrusted collar (3,000 gp each). These collars are their only possessions. They have no lair.

### G15 THE YELLOW ROSE ARBOUR and G16 THE RED ROSE ARBOUR

These areas are each enclosed by a thick, thorn hedge (12 feet high and 3 feet thick) which behaves like a druid's **wall of thorns** spell. Inside each is a rose arbour with 8-foot-high bushes of yellow or red roses around which smooth grass pathways wind. The air is heavy and sweet with the perfume of the blooms, while bees and butterflies abound and many exotically coloured birds can be seen and heard among the shrubs. None of the creatures inhabiting the garden will enter these arbours save the Green Man, who is immune to its effects — for the perfume of these roses is a subtle poison.

**Yellow Rose Poison.** Anyone with a wisdom greater than 10 must, within one melee round of entering this area, make a saving throw vs. Poison or lose one point of wisdom with all the consequences that implies. The loss is temporary and lasts until the character leaves the garden. Of course the players should not be told of the transient nature of the loss; indeed

they will not be immediately aware of it, as the DM should roll the relevant saving throws secretly (see below).

Albeit they are temporary, the effects could well worry the party: clerics may find certain spells missing from their minds and druids, rangers and paladins may cease to be members of these classes. Party members will be unaware of this loss until they attempt some action no longer within their capacity.



**Red Rose Poison.** In the Red Rose arbour there are similar effects which cause losses to strength; again temporary, but which may cause similar distress to certain characters (e.g. rangers and paladins).

In each arbour only one point of the appropriate ability can be lost by each party member. Negation of the effects of the rose perfume requires a **neutralise poison** spell or potion, a draught from the **Fountain All Heal** or a **wish** of either kind. Upon recovery all lost abilities and spells will return. There is nothing of value in either area.

### G17 LAKE AND WATER PALACE

As the party near the lake:

The gravel bottom of the lake slopes gently away from the shore and appears, through the crystal clear water, to level off at a depth of about 8 feet. Brightly coloured fish are swimming about, water lilies float on the surface, frogs splash among the reeds and brilliant dragonflies hover above the water.

In the middle of the lake can be seen a small building; a single storey summerhouse, rising above the surface of the lake. It is apparently constructed of white stone with a curved white roof and a verandah all around it about 10 feet above the water. Below the verandah there appears to be some kind of landing stage.

A small jetty juts out into the lake from the shore and a small boat bobs on the water next to it.

The lake is fed by the stream flowing from the **Fountain All Heal** (G9) and by a larger spring in its bed. A stream exits from the southern end.

The lake and the **Water Palace** are now the home of a family of giant otters, two adults (AC 5; MV 9"/18"; HD 5; hp 18, 23; #AT 1; D3-18) and four young (AC5; MV 9"/18"; HD 1+2; hp 4, 6, 6, 7; #AT 1; D 1-6).

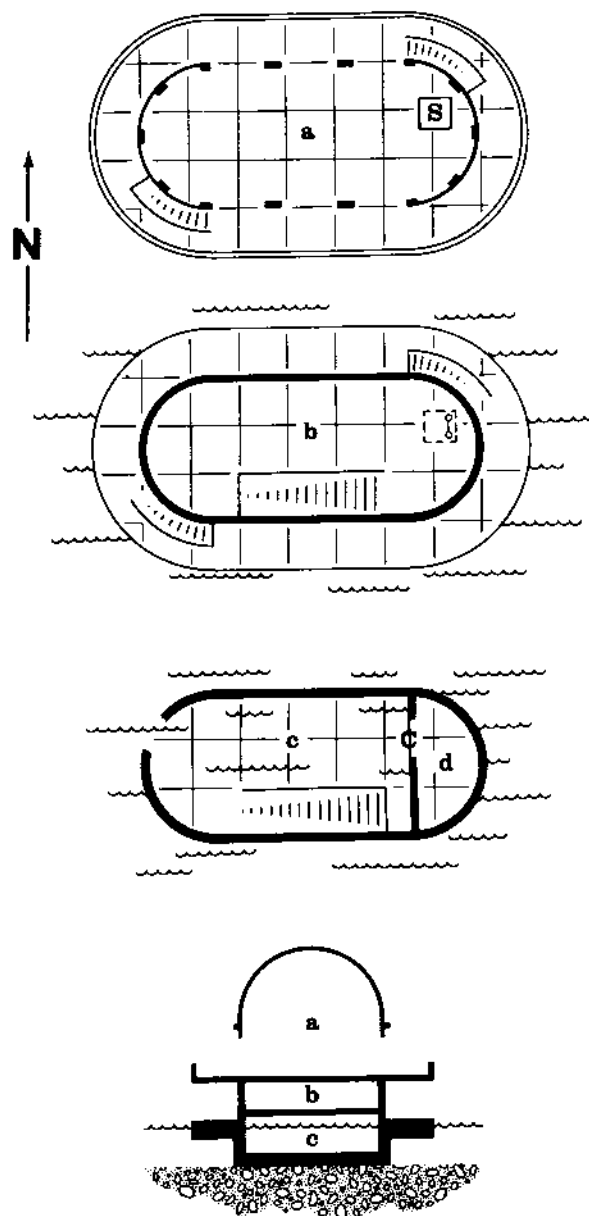
The boat tied up at the jetty is a punt with a single pole. It is capable of carrying up to six characters. As punts are very difficult craft to propel, an inexperienced punter (i.e. nearly every character) will only be able to move it at a rate of 3". There are many possibilities for the DM to use his imagination here: have the punt go round in circles, have the pole stick in the mud beneath the gravel (with or without the punter still

clinging to it), etc. Check the characters' secondary abilities and use dexterity as a yardstick of success.

The adult otters will be swimming around under the water and if the party use the punt to cross the lake there is a 90% chance that they will encounter the pair at some time during the crossing (check for this as the party set out). Unless attacked the otters will be playful; swimming around the boat, performing antics, splashing water over the gunwales and making mock attempts to turn the boat over. It is always possible that the party will misinterpret these actions and attack the otters. In that case the otters will seriously attempt to overturn the punt. Each adult has a 30% chance per round to upset the punt. Once they have capsized it they will attack the party members in the water. See **DMG** p 56 for advice on how to conduct underwater movement and combat. Encumbered characters will drown in five rounds, and will take 1-8 points of suffocation damage each round under water. Characters will fight and move underwater as if **slowed**.

**The Water Palace:**

### THE WATER PALACE (G 17)



The building is of white marble with a white, translucent roof. The railings and other fittings are of gilded metal. The two round ends of the building have arched, glazed windows. The straight sides have large open archways, allowing an easy flow of air through the building.

The verandah and the floor level of the building are about 10 feet above the lake surface. Below the verandah and extending all around the building there is a landing platform about 2 feet above the water. This has metal rings at intervals for tying up boats and metal steps lead up from it to the balcony.

#### a. Main Room.

The floor, walls and ceiling of this room are of plain white stone. In the centre of the room is a long white table with four padded chairs arranged around it. On the table is a silver tray bearing a crystal decanter and four crystal glasses.

The tray is silver (90 gp), the decanter contains fine wine, and it and the glasses are worth 60 gp (in total). In the floor is a secret trapdoor (marked with an S on the plan) which can be located by normal means. Except by the use of the password ("winter is come"), however, it requires a **knock**, **passwall**, **rock to mud** or a **wish** of either kind to open. All the garden inhabitants know the password but none will divulge it to the party save, perhaps, a drunken leprechaun. Going down from the trapdoor is a rusty iron ladder. It will bear only one character (of whatever weight) at a time. If two or more climb at once it will break and each person will fall and receive 1-6 hit points of damage.

#### b. Giant Otters' Lair.

There are no light sources in this room except for the trap door if it is open.

The room is warm and humid and a strong, but not unpleasant, animal smell fills the air. The ceiling is low, about 6 feet high. The floor of the southern portion of the chamber is covered with a large pile of straw and other dried vegetation.

This is the nest of the otters; the four young will always be encountered here. The adults (if still alive) are fearful for their young and will have watched the party and entered their nest via the entrance hole in the chamber below unless prevented from so doing. In the presence of their kittens the adults will always attack any character entering this chamber and the young will defend themselves if attacked.

#### c. Flooded Chamber.

The appropriate description for this room will depend on the direction of approach. The DM should create his or her own description from the following:

This chamber, which is about 8 feet from floor to ceiling, is flooded to a depth of about 5 feet. At the southern end below the water level is a hole about 3 feet across which emerges beneath the surface of the lake. This hole is the otters' entrance and is concealed from being seen from above the surface by the overhang of the landing platform. It is quite possible for characters to crawl through this hole to gain access to the flooded chamber. As soon as any character attempts this he or she will be attacked by any surviving adult otters. The floor of the chamber is covered with a layer of gravel.

#### d. Weapon Store.

This chamber contains the secret armoury prepared by Porpherio for use by the various garden inhabitants in time of dire emergency. Every garden inhabitant knows of the location of this store and how to reach it (being able to pass through the

secret trapdoor in **room a** without difficulty). Note, however, that this information is not automatically gained by a character who falls under the spell of the **Fountain All Heal**. It must be revealed to him or her by one of the garden inhabitants, who will be careful not to let other characters know. Enchanted characters will be similarly secretive. None of the garden denizens (apart from the Green Man) has ever been inside the store, and so they have no detailed knowledge of its actual contents. Hence, if a party can subtly remove the contents (e.g. by bypassing the otters in some way) they will encounter no animosity from garden inhabitants who may see them carrying any of these items. The Green Man (see area G18 and the **APPENDIX**) will insist that they return them, however.

A water-tight seal around the concealed door has prevented the chamber from flooding and as the door opens into the chamber it will be rapidly pushed open by the weight of the water once the catch is released. The chamber will then flood.

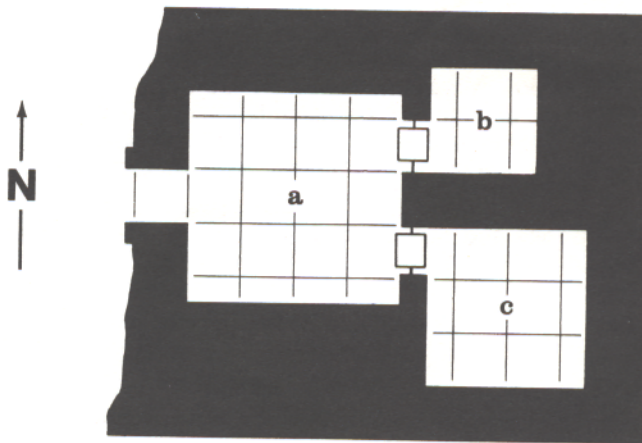
Inside are the following items:

a **short composite bow** +1,  
six **arrows** +2,  
a **dagger** +2,

a hollow metal tube on a shelf containing two scrolls, each with **protection from undead**, and two wands, a **wand of magic missiles** (20 charges) and a special **wand of wonder** (45 charges). (The leprechauns can specify the effect of this **wand of wonder** when using it; they are not subject to its randomness).

a small wooden box which is unlocked and untrapped and holds three phials each containing one dose of a potion—two are **extra healing** and the other is **fire resistance**.  
a small bag hanging from a hook on the wall, containing two **rings of protection**; one +1 and the other +2.

## THE GREEN MAN'S LAIR (G18)



### G18 THE GREEN MAN'S LAIR

An opening in the steep bank to the south of the maze is the entrance to the Green Man's home. The Green Man is a demigod who has a great interest in the natural world. Before his death Porpherio persuaded him to become the keeper of the garden (full details of the Green Man are given in **Part V —APPENDIX**).

The entrance is 10 feet square with two upright beams supporting a wooden lintel. The beams and lintel are partially covered by a climbing dog-rose.

**Room a:**

As you walk in you notice that it is full daylight within the cave although no shadows are cast. The room is about 40 feet square. In it are as many tables and stands as can be fitted in without making progress to two doors at the rear impossible. One of these doors is to the left of the back wall and the other is to the right. On the tables are jars, bowls, retorts, mortars, crucibles, alembics, gallipots, boilers, bottles; spatulas, ladles, spoons, pipettes and massive tomes with ornate spines. The room is so crowded it is difficult to know where to look first.

All these artifacts are the materials used by the Green Man in his amusements — the study of the growth of all things, especially yeasts and their effects on barley and grapes. All the containers have coloured liquids, powders or vegetable matter in them. Most are in some stage of fermentation. Despite their curiosity, these containers and tomes which he has collected from far and wide in time and space do not have a resale value.

Unless somehow removed from the garden by the party, the Green Man will be (no matter where he was moments before) standing at the rear of this room, arms folded, watching the party with quizzical amusement. Should the party move further into the room without first speaking to him, he will gently but firmly usher them out. Force used against him or his equipment (which he values highly due to its rarity) will result in the Green Man breathing on the party until they collapse or run away. Those that collapse will be carried to the lake shore and dumped in the water (the water at this point is about 3 feet deep). This will revive them. The otters (see area G17) will, naturally, come over to play ...

The party may engage the Green Man in conversation and so long as they have not wilfully harmed any garden creatures or plants and there are no evil creatures in the party the Green Man will converse with them. After one round he will invite them into his parlour, beyond the left hand door.

**Room b:**

This room is 20 feet square and comfortably furnished. It is lit in a similar manner to the one you have just left. There is a large, soft bed and a roomy armchair with a footstool. A warm rug lies on the floor. One wall is shelved and the shelves bear many scrolls and books, an array of colourfully decorated small tubs, and a rack of smoker's pipes. Hanging from a projecting root above the head of the bed is a harp.

The books and scrolls are not magical. They are research papers and volumes gathered during an aeon of travelling in space and time. None are in any language familiar to any of the party. A **read languages** spell would only allow the caster to recognise the books and scrolls for what they are: a broad range of mundane text books, mostly about gardening and brewing. The small tubs (there are 17 in all) each contain a different type of pipeweed. Due to the Green Man's extensive travels these pipeweeds are highly exotic and unusual.

If the party is chatting with the Green Man he will engage them in conversation at length, offering ales and wines for their refreshment and letting the pipe smokers have free choice from his wonderful selection of weeds. He will reveal none of the garden's secrets, but will otherwise boast at length of its splendours and regale the listeners with long stories of his travels. At the end of the conversation he will urge the party to stay permanently in the garden and, if they refuse, warn them to harm nothing during their stay. If specifically asked about how to leave the garden he will direct the party to solve the secret of the maze (G19), but will give no hint of how to do so.

The harp on the wall is a **lyre of building**. The Green Man will

allow a bard to play it if asked. The bard will not be able to recognise it for what it is nor will he accidentally strike the chords that operate it. The Green Man will not part with the lyre and if pressed too strongly will ask the party to leave. A refusal will have the consequences outlined above.

There is a second room that leads from the front cave (beyond the right hand door). If continually asked to do so, after a period of at least five turns of talking and drinking, the Green Man will be persuaded to show the party this other room. The Dungeon Master should bear in mind the chance of the party becoming intoxicated following this carousing (see DMG p 82).

This third room is the plant nursery.

**Room c:**

You enter a sweet smelling, well lit room about 30 feet square. Neatly arranged around the sides, and in a row down the centre, are trestle tables bearing shallow trays of earth. Each tray has growing in it a different species of plant — each species seeming more rare than the last. There is a gentle green light suffusing the plants. The walls and ceilings are bare.

The room is exactly as it seems. It will be of consuming interest to druids, of mild interest to rangers and most elves and quite boring to others. There is nothing of value to the party in this room.

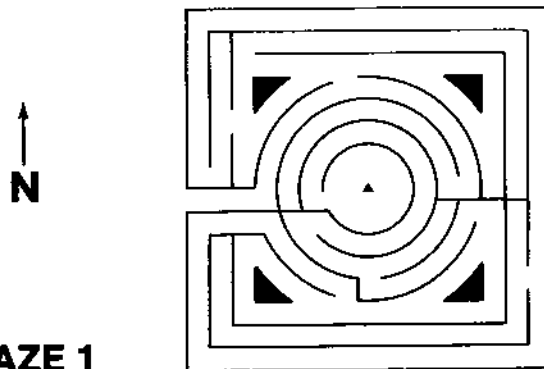
It is possible that party members may gain entrance to either of these rear rooms without the Green Man's permission. It is impossible for them to do so without his cognisance. He will consider such behaviour an act of aggression and react accordingly.

If questioned closely by players about the plants in this room, the DM may find himself in some difficulty. Certain parts of the **Dungeon Masters Guide** (e.g. APPENDIX J) may help but if pressed the DM might simply care to inform druids etc., that while the plants in the room and any comments passed by the Green Man were quite fascinating to them, they gained no information of any practical use.

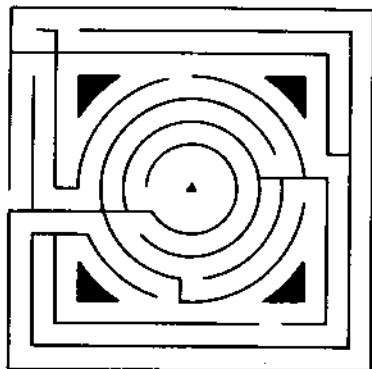
**G19 THE MAZE**

The maze is constructed of thick 12-foot-high thorn hedges (treat as a permanent druidic **wall of thorns**) through which run grass pathways and in the centre of which is a sundial (shown by a solid, black triangle on the plans below).

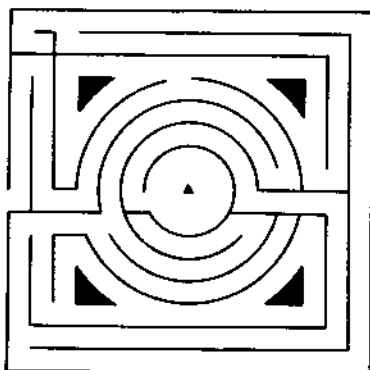
The diagrams below and right show the patterns of the labyrinth. When the party first enters the maze takes the form of pattern 1. If they then try and leave they will do so through pattern 2. On a second entry they will be greeted by pattern 3 and on a second departure, pattern 4. This cycle change of patterns will occur continuously as the party or party members enter or leave. The switching is caused by one or more party members entering the maze or leaving the central area.

**MAZE 1**

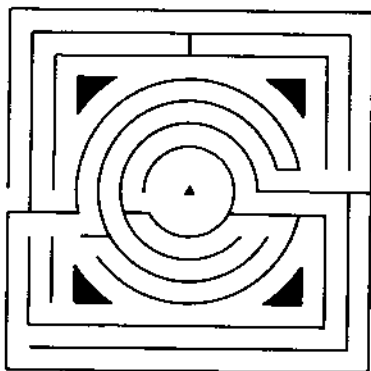
MAZE 2



MAZE 3

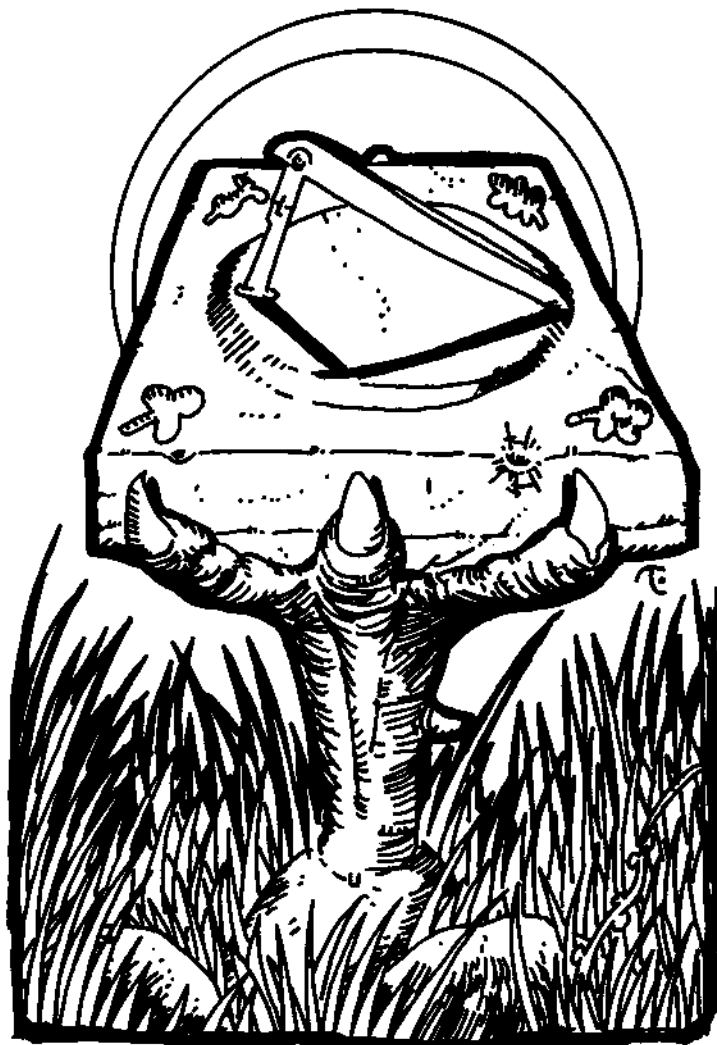


MAZE 4



The entire maze area is under a special enchantment which distorts distances in such a manner so to make accurate mapping by party members difficult. When asked for distances, the DM should randomly add to, or subtract from the actual distance between 10 and 40%. This will not apply if the party goes to great lengths, using string and ruler for example, to obtain precise distances.

The sundial always indicates that it is noon. On the flat top of the dial are four impressions in the shape of garden plants: an oak leaf, a dog-rose flower, a sprig of mistletoe and a shamrock. Druids and rangers will have no difficulty in identifying these plants, though other characters may require some hints. In any event the DM should ensure that the plants are identified in order that the players have a chance of solving the puzzle and moving on to the next part of the adventure.



If these depressions have the specified plants (or the special teleport keys that exist in the **Palace of Spires**) placed in them all characters in the central area of the maze will be transported to the gatehouse of the **Palace of Spires** (P1).

For the information of the DM the locations at which the four plants may be found are as follows:

- Oak leaves:** Any oak tree (there are present in the **Dryad's Woods** and the **Barkburrs' Grove**).
- Mistletoe:** Only on the oak trees in the barkburrs' grove.
- Shamrock:** Common in the leprechauns' woods.
- Dog-rose:** Near the **Fountain All Heal** (G9) and the **Green Man's lair** (G18).

Garden inhabitants who are on friendly terms with the party will give directions to the locations of these plants if asked but will make no mention of the inhabitants of the areas where they occur. Collecting these plants is not to be considered as damage to the garden for the purposes of determining the reactions of the inhabitants.

The maze was built to guard entrance to the **Palace of Spires** after Porpherio's passing. The intelligent inhabitants all know of its purpose, how to negotiate it, and how to use the sundial key correctly. They will not willingly impart any of this information to the party.

This ends **Part III** of this module. On passing through the teleport mechanism the characters find themselves in the **Palace of Spires** which is described in **Part IV**.





## PART IV — THE PALACE OF SPIRES (Areas P1 — P13)

### INTRODUCTION

This magnificent palace, consisting of the main building and adjoining walled garden, was erected by Porpherio to house himself and Caerwyn his beloved. The palace once faced the lake, as its original site was that now occupied by the maze (G19).

After Caerwyn's death he built a tomb for them both in the palace's crystal dome and transported the whole building into a parallel dimension. He joined the palace to the garden by a teleport link and protected the garden end of it with a maze which covered the palace's old site.

Although the palace is not actually within the garden at all, and cannot be seen from there, the view from any part of the palace is exactly as it would be were the palace still on its original site. However, the dimension in which the palace exists is very limited indeed and so, while it is possible to see out, it is not possible to leave it by physical movement (e.g. by climbing over the walls). Characters attempting to move out of the palace will encounter what appears to be an impenetrable force field (in fact the edge of this limited universe).

Despite its location, the palace is, essentially, still a part of the garden, and so the garden's restrictions on fire and flying apply here also. The spells which will not operate in the garden will not operate in the palace either. Note, however, that the Green Man will under no circumstances leave the prime material plane to enter the palace (even in response to spells which would have attracted him in the garden itself). The walls inside the palace are very smooth and those with climb walls ability will find them difficult to climb (-15% chance to climb). The spell **spider climb** will operate as usual.

When Porpherio transported the palace to the parallel dimension it became a permanent, unchangeable entity (after all, it does constitute the whole universe!). This means that none of the fabric of the building can be damaged in any way whatsoever. Note, however, that the caryatid columns are later additions to the structure and can take damage.

There are no wandering monsters within the **Palace of Spires**.

### ENCOUNTER AREAS

#### P1 GATEHOUSE OF THE WALLED GARDEN

As the party pass through the teleport device from the maze:

You feel a mild lurch and everything goes black for a moment. When your vision returns you find yourselves inside a structure which takes the form of a short, square tunnel outside which it is daylight. In front of you this opens out onto an enclosed formal garden. The walls of the garden are about 15 feet high with crenellated tops and are pierced by arched, slit windows.

Behind you the other end of the tunnel is blocked by a pair of close meshed, wrought iron gates through which you can see a lake lying beyond a greensward. There is a white structure in the centre of the lake.

In the enclosed garden, to the right and left, are well ordered flower-beds with vivid blooms arranged in intricate patterns. A myriad of butterflies form a moving cloud over the flowers. Directly before you, a few feet outside the tunnel, is a sundial, apparently identical to the one in the maze. Beyond the sundial, between the flowerbeds, is a rectangular pool of water with a mirror-like surface.

Reflected in the pool, and towering over the far side of the garden, is a magnificent white palace with lofty turrets, arched windows and large, silvered, double-doors reached by broad steps inside a large porch.

Paths of multi-coloured gravel lead around the garden (next to the wall) and between the pool and flower-beds.

The garden is apparently unoccupied.

The gates are not locked and can be opened easily. However, it is not possible to move outside because of the para-dimensional position of the palace (see above). Note that the party will always arrive facing east.

The sundial, if activated with plants in the same way as that in the maze, will cause the gatehouse to teleport those entering it (within one round) back to the centre of the maze. However, the palace gardens do not contain any of the four plants required to operate the device and so, unless the party has brought the appropriate plants with them, they will be unable to return to the garden except by using a set of the special keys (see below, rooms P6 and P7).

#### P2 THE WALLED GARDEN

When the party enter the garden itself:

The pool is perfectly clear and about a foot deep. Many silver- and gold-hued fish can be seen swimming in it.

From your new position you can now see that in each of the two corners of the garden away from the building there is a circular bower with a conical roof, built to resemble the turrets of the main building.

Like the rest of the palace, the pool and flowers etc., are slightly magical and a magical aura, therefore, exists throughout. The dweomer serves only to keep the garden in order without the need for other attention. The contents of the palace garden are otherwise quite normal. The same magic operates in the palace roof gardens (areas P9, P10 and P12).

#### P3 CORNER BOWERS

If any character enters one of the bowers:

On entering this circular bower you begin to hear sweet, gentle music. There is a padded bench around the inside of the bower which looks very comfortable. You begin to feel drowsy....

In fact, although the bowers have the property of aiding sleep, no character will actually fall asleep unless he wishes so to do.

Anybody who does fall asleep can be easily woken, but if left alone will wake after three turns as refreshed as if he had had a full night's rest (i.e. one hit point regained, spell-learning potential restored, etc.).

#### P4 ENTRANCE PORCH

As the party approach the double doors:

Inside the porch, a flight of broad stone steps leads up to an arched doorway. The arch over the door protrudes from the wall and is supported by a slim stone pillar on either side.

The huge double doors, each 10 feet wide and 30 feet high, are of silvery metal and decorated with a fine incised geometric pattern. There are no door handles.

In black letters around the arch over the door are written the words "Enter in Peace."



The words on the arch are a special form of illusion which enables any intelligent creature to read them. If asked which language they are written in the DM should give as his answer the language most native to the questioner (e.g. common for a human, Elvish for an elf).

The doors are of bronze, thinly plated with silver, and 1 foot thick. They will not open for a party any of whose members are carrying weapons or magical items which might be used in an aggressive manner. When a party has laid down all such weapons and items the doors will swing open (away from the party) automatically.

If any character then attempts to take weapons (or offensive magic items) into the palace the pillars on either side of the door, which are in reality caryatid columns (AC 5; MV 6"; HD 5; hp 22, 22; #AT 1; D 2-8; SD save vs. Magic at +4, only hit by magical weapons — see the **FIEND FOLIO™** Tome for full details) will animate and attack the party, concentrating on those carrying weapons or casting offensive spells.

The caryatid columns will cease to attack as soon as characters lay down their weapons.

Note that the caryatid columns' response to armed characters does not apply to those who have fallen under the spell of the **Fountain All Heal**. However, such characters will never willingly aid the rest of the party in any deceit to get weapons into the palace.

The caryatid columns will also attack if any attempt is made to open the doors other than by laying down of arms. The doors

can be opened by the use of a **knock** spell or if a combined strength of 60 points or more is applied to push them open. Like the rest of the building they cannot be damaged and since they are not locked (in the mechanical sense) they cannot be picked by a thief.

#### P5 ENTRANCE HALL

As the party go through the double doors:

Before you is a large, airy room with floor and walls of white veined marble. The lofty ceiling (40 feet above) is also pure white.

There are two small glass-topped tables, each with five comfortable-looking chairs arranged around it. On each table stands a crystal decanter, a bowl of fruit and five crystal glasses.

At the far end of the room a large, semi-circular alcove and a semi-circle of slender pillars form a circular area in the centre of which is a fountain. The ceiling of the room does not extend over this area.

The jet from the fountain rises into this opening. A fine, unsupported, metal spiral staircase winds upwards around the jet.

The decanters contain a mildly intoxicating, perfectly transparent, colourless wine, and, in total, the objects on the tables are worth 210 gp. The fruit (apples, oranges, figs and grapes) is quite ordinary, as is the water of the fountain.

If the party enter the rear part of the room:

The ceiling of this circular area is transparent and 80 feet above the floor; resting on it you can see an opaque square shape.

The fountain jet rises to about 70 feet but the spiral staircase stops at about 40 feet where a short cat-walk appears to connect it to the floor above.

Light enters through the lofty ceiling and also through windows which extend between it and the top of the staircase.

Like the rest of the building the transparent ceiling cannot be damaged.

Loud noises in this room will be heard by the occupants of the two adjoining rooms (P6 and P7). There is an 80% chance that Hamish and Argus (from room P7) will investigate any unexpected noise. There is only a 20% chance that Juliana and Orlando will investigate.

### P6 ORLANDO'S AND JULIANA'S ROOM

As the party enter:

This room has a comfortable air about it. The floor is decorated with four rectangular mosaics which depict the four seasons. Hanging on one of the walls, which are white and otherwise unadorned, is a tapestry showing two charismatic humanoid figures (one male and one female) standing in a woodland glade surrounded by creatures both mundane and fantastical.

The furniture of the room consists of a large four-poster bed, two wooden chests, three plain wooden tables, six comfortable-looking chairs and two couches. One of the couches hangs on slender chains from the ceiling and is swinging gently to and fro. Also hanging from the ceiling (which is 40 feet high) are a number of gilded perches on which sit a total of six brightly coloured song-birds chirping in harmony.

Seated on the swinging couch are two humans, one male and the other female, each dressed in bright robes. The woman is petting a small bird perched on her finger. The couple appear surprised but not perturbed when they see the party, and rise smiling to greet you.

The room contains nothing of great value except for the tapestry, which is worth 950 gp. The chests (which are unlocked and not trapped) contain simple clothes and some copper jewelry (total value 12 gp).

The couple on the couch are the governor's daughter Juliana and her paramour, Orlando. Neither of these has any special profession and are considered as 0 level. Neither is armed in any way.

**Juliana** (AC 10; MV 12"; NM; hp 4; #AT 0; D nil; AL NG; S 9, I 12, W 10, D 9, C 11, Ch 16). Her robe is fixed with a copper brooch (value 2 gp) and she is wearing a copper pendant in the shape of a leaf hanging on a grass thong (value 3 gp). In a pouch on her belt are a set of **teleport keys** (see below for details).

**Orlando** (AC 10; MV 12"; NM; hp 5; #AT 0; D nil; AL NG; S 12, I 13, W 7, D 9, C 12, Ch 15). His cloak is fixed with an ornamented copper pin (worth 3 gp). On a chain around his neck hangs a set of **teleport keys** (see below for details).

Note that although Orlando and Juliana have been missing for some two years in the outside world, it appears to them as if only one day has passed since they entered the garden.

The secret compartment (P6a) is where the couple have stored the clothes they were wearing on arrival along with other items which would remind them of their unhappy former life. The

compartment contains two sets of fine travelling clothes, a **short sword +1** (NSA), a dagger, a purse containing 30 gp, and three gems worth 40 gp, 90 gp, and 150 gp, a gold ring bearing Orlando's family crest, value 80 gp, a smaller gold ring with a gem, value 300 gp, and a silver holy symbol (a mare's head) on a fine chain, value 50 gp.

Each set of **teleport keys** consists of a small replica, in gilt-silver, of each of the four plants needed to operate the teleport from the maze (G19) to the palace and vice versa (i.e. a shamrock, a dog-rose, an oak leaf and a sprig of mistletoe). They have a magical aura and an intrinsic value of 210 gp a set.

If laid on the sundial at either end of the teleport they cause it to be activated in the same way as the actual plants except that they are teleported with the creature using them and can be retrieved from the sundial at the other end.

Another secret door opens onto a spiral staircase. This leads only to the northern crystal bridge (P11); there is no access from it to the northern roof garden (P9).

Any loud noises in this room will be heard by Hamish and Argus in their room across the hall (P7) and there is an 80% chance that they will come to investigate. Normal conversational tones will not bring them over.

### P7 HAMISH'S AND ARGUS' ROOM

As the party enter:

The floor of this room is decorated with a large, circular mosaic depicting various astrological symbols with a large sun in the centre. The ceiling is 40 feet above the floor and is dark blue, decorated with tiny gold stars.

The walls are white and undecorated except for a huge tapestry hanging on one wall. This shows, in a stylized manner, a magic user raising up a magnificent garden by the casting of spells. A beautiful woman looks on adoringly.

The furniture in the room consists of two simple beds, two chests, six comfortable-looking chairs, two couches and a wooden table.

There are two men in the room. One, wearing a light robe, is reading at a table. The other, in chain mail armour, is carving a piece of wood with a dagger.

The two men are former adventurers who, having fallen under the spell of the **Fountain All Heal**, have been living here for the last four months. Note that this corresponds to about 240 years in the outside world! Both are human, one a 5th level fighter named Hamish and the other a 3rd level magic user called Argus.

**Hamish** (AC 0; F5; hp 35; #AT 1; D by weapon type; AL NG; S 18, I 9, W 10, D 16, C 15, Ch 10). He wears **chain mail armour +2** and uses an ordinary shield which rests beside his bed. He is armed with a **longsword +1** (NSA) and a non-magical dagger. There is a set of **teleport keys** in his belt pouch.

**Argus** (AC 5; MV 12"; M 3; hp 9; #AT 0; D nil; AL NG; S 9, I 15, W 9, D 18, C 10 Ch 11). He is wearing a simple, light robe fixed with a copper brooch, and a **ring of protection +1**. In a small belt pouch he has a set of **teleport keys**. His memorised spells are:

First level: **charm person, sleep**  
Second level: **web**

Both Hamish and Argus, like the other inhabitants of the garden, believe Juliana and Orlando to be Caerwyn and Porpherio returned to life. The fact that both Juliana and Orlando have denied this they regard as a simple loss of memory, possibly caused by the trauma of rebirth. Indeed, Hamish and Argus have gone some way to converting the couple to their belief during their brief friendship. The memory

of the founders of the garden was held in great reverence by its inhabitants and consequently Hamish and Argus will defend the young couple with their lives.

Note that loud noises from rooms P5 (the entrance hall) or P6 (Orlando's and Juliana's room) will be heard by the two men who will investigate. Other, less alarming, noises will not attract Hamish and Argus who, assuming it to be Orlando and Juliana, will not intrude on their privacy.

Inside the secret compartment (P7a) are the following:

Argus' spell book in which are written the following spells;  
 First level: **read magic, charm person, sleep, hold person, push**  
 Second level: **web, ESP,**  
 Argus' **wand of magic detection** (this has 19 charges and the command word "kmissik" is written on the back page of the spell book);  
 a bag containing 15 sp, 30 gp, 10 pp, and a gem worth 550 gp;  
 a small ivory inlaid box (value 130 gp), containing five sets of **teleport keys**;  
 a bottle containing three doses of a potion of **extra healing**.

Another secret door conceals a spiral staircase which leads up to the southern crystal bridge (P11). There is no access from this staircase to the southern roof garden (P10) or vice versa.

### P8 GALLERY

If the party climb the spiral staircase in the entrance hall:

The spiral staircase ascends to a room which appears to extend from the back to the front of the building. The staircase is linked to the floor of the room by a short cat-walk and the large circular opening in the floor (through which the staircase and fountain ascend) is separated by a low, stone parapet.

There are three marble statues in each of two rows in the room, plus one in each of the deep circular alcoves in the far corners. On each of the side walls hang three paintings. The statues and paintings on your right are all representations of a beautiful half-elven woman. Those on the right depict a handsome male human.

On the far wall, directly ahead, hangs a large painting showing the two together. The floor, walls and ceiling (about 20 feet high) are plain white.

These works of art are all exquisite and the DM may invent fantastic apparent values for them (well over 10,000 gp each). However, any painting or statue removed from the gallery will then act in all respects as a **stone of weight (loadstone)**. They are therefore unsaleable.

### P9 and P10 ROOF GARDENS

The two areas are almost identical (being mirror-images):

You have come onto an open, flat roof bordered on three sides by a 3-foot-high crenellated parapet. There are four beds of subtly coloured flowers divided by paths. In the centre is a small table with four chairs around it.

There is an excellent view of the garden from here.

There is nothing of particular interest here.

### P11 CRYSTAL BRIDGES

These two bridges are identical:

Linking the portal in the turret with another in the turret about 35 feet away is a slender, unsupported, transparent bridge about 4 inches wide. Thirty feet below is the parapet of a roof garden and 50 feet below that the ground.

It is impossible to fall off these bridges and any character who attempts to cross will succeed. Even so, there is no need for the DM to give the impression that the bridges are anything but extremely dangerous or that any character who succeeds in crossing is anything but very lucky indeed. The rolling of a number of dice should help promote the player's fears...

The bridges have the strange property that no non-magical rope (nor grappling-hook etc.) can be effectively attached to it. Even if such a rope is tied around the bridge, the knot will rapidly work loose. Magical ropes will work as expected.

### P12 UPPER ROOF GARDEN

You have come out onto an open flat area bounded on three sides by a low crenellated parapet.

There are two long flower beds here. The right hand one contains nothing but blooms of a deep red hue. Those in the left hand bed are all spotless white.

The far end of the area is bounded by a structure consisting of a large, translucent dome, supported by a 20-foot-high circular wall.

A broad stone path between the beds leads to a flight of steps which ascends to a door in the dome.

There is nothing of great interest here. No details of the inside of the dome can be seen from outside.

### P13 THE TOMB OF CAERWYN AND PORPHERIO

The room you have entered is the inside of a hemispherical dome. The dome, and the floor, are perfectly transparent from the inside, and the view of the garden from here is superb.

In the centre of the floor is a white stone slab, approximately 10 feet on a side and 3 feet high. On top of this lie a pair of life-sized statues of a man and a half-elven woman as if asleep.

Around the sides of the slab, in letters of gold, are written the lines:

O stranger, whom fate hath brought nigh,  
 Leave those within in peace to lie.  
 If thou wouldst deign grant our request,  
 Then fate will move at thy behest.  
 This gift from the contented dead,  
 We swear to grant by heart and head.

The writing on the slab is of the same sort as that above the doorway into the palace building (see P4).

The slab (marked with an asterisk on the plan) is the tomb of Caerwyn and Porpherio, and a fine crack showing the join between the lid and the base may be found (treat as concealed door).

*If the party refrains from opening the tomb each member will, on placing his hands on the heart and head of either of the recumbent statues, be granted one full wish.* Characters will be made aware of this gift by a soft female voice audible only to them. The voice will inform them that the **wish** must be used before returning to the outside world, and will also warn that this return will be soon (see below). If the tomb is opened (which requires the application of at least 25 points of strength) or violated in any way then no further **wishes** will be granted to any party member. In addition any **wishes** already granted will be cancelled immediately, even for those members who may protest and/or disassociate themselves from the desecration. The enchantment of the garden and palace is quite capable of forgiving other acts of violence carried out by party members since entering the garden.

Characters may only gain one **wish** in this way. Those who re-enter the garden having already had a **wish** granted (even if not used) will not gain another.

Note that characters on whom the **Fountain All Heal** has worked its magic will have no desire to gain a **wish** and if they are forced to go through the motions then no **wish** will be granted. They will fight to the death to prevent any desecration of the tomb.

If the tomb is opened it will be found to contain the perfectly preserved bodies of Caerwyn and Porpherio, lying in each others arms as if only sleeping. She is wearing a plain gold ring (value 15 gp) while he wears a fine gold chain (value 20 gp) around his neck. There are no other items of value. As Caerwyn and Porpherio were obviously, in life, good and kindly people the DM might care to consider the opening of their tomb an act of evil, and characters of good alignment should be penalised accordingly.

In the event that a character attempts to use his **wish** to return the lovers to life (or attempts to use other means, e.g. **raise dead**), they will simply stir momentarily before returning to the sleep of the dead in which they have found contentment. If contacted by means of a **speak with dead** spell (or otherwise) the couple will state that they have no wish to be returned to life and will speak no more.

The DM should look favourably on a character who decides to use his wish to erase any misdeeds committed since entering the garden. If a **wish** is used in such a way it will affect time such that the unfortunate events concerned never actually happened. The use of a **wish** will not enable a druid to make permanent the temporary level gain which he experienced on entering the garden.

In any event, 12 turns after one or more of the party first enter this domed room every party member (except those who have succumbed to the **Fountain All Heal** — G9) will fall into a deep

sleep. There is no way of preventing this. When they awake they will find themselves and their possessions (including anything they may have acquired from the garden, and any weapons, etc., left in the entrance porch, P4) in the **Cave of Echoes** (C2). Those on whom the magic of the fountain still holds will not leave with the party.

### THE COMPLETION OF THE QUEST

The removal of the effects of the fountain requires the use of a **wish** for each person concerned. If the party decide to expend two wishes in freeing Juliana and Orlando from the enchantment they will still have to persuade the couple that their families have been reconciled and that there is no impediment to their future life together in the outside world. While the DM should ensure that the party experience some apparent difficulty doing this (for example there will be some confusion concerning the time elapsed since the couple's elopement) he should, in fact, reward any reasonable attempt with success.

Once persuaded to leave, Juliana and Orlando will bid farewell to Hamish and Argus, take up their possessions from the secret store (P6a) and depart with the party; falling asleep at the same time and awaking with them in the **Cave of Echoes** (C2).

When they awake characters will find that their memories have been distorted such that their entire adventure will take on a dream-like quality. They will be unable to recall important details and will not willingly relate anything about their experiences to those outside the party. The same effect will apply to Juliana and Orlando if they have been induced to leave the garden.



## PART V — APPENDIX

### NEW MONSTERS

#### MUD-MAN

##### DEMIGOD

FREQUENCY: Very rare

NUMBER APPEARING: 2-12

ARMOUR CLASS: 10

MOVE: 3"

HIT DICE: 2

% IN LAIR: 100%

TREASURE TYPE: Nil

NUMBER OF ATTACKS: Nil

DAMAGE/ATTACK: Nil

SPECIAL ATTACKS: Mud-throwing

SPECIAL DEFENSES: Need magical weapons to hit

MAGIC RESISTANCE: Immune to certain spells (see below)

INTELLIGENCE: Non

ALIGNMENT: Neutral

SIZE: Small (c. 4')

PSIONIC ABILITY: Nil

attack/defense modes: Nil

Level/xp value: 11/28+2 per hit point

Mud-men are formed in pools of mud where enchanted waters (even mildly enchanted ones — for example, a stream eroding a magical structure) collect and evaporate, so concentrating the dweomer.

Physically they are animated mud, taking a stocky humanoid form when roused. Slow moving and unable to leave their pool of mud, mud-men have but one aim in life — to kill any creature more mobile than themselves which enters the pool. Virtually all creatures, and certainly all humans and demi-humans, fall into this category.

In their dormant state, mud-men lie below the surface of their pool with the substance of their bodies spread throughout it, feeding on the dweomer of the mud. In this state they are immune to attacks with weapons (magical or otherwise). They are, however, susceptible to spell attacks (see below).

When a character or creature enters the mud pool the mud-men sense its presence immediately and take one round to draw together the substance of their bodies and rise to a standing position ready to attack in the next round. Once fully formed and standing they may be harmed by weapons provided they are magical.

Mud-men attack by hurling mud at their opponents, who are considered as AC 10 (modified by dexterity) for the purposes of determining hits. The mud hardens on impact and slows the movement of the victim. At first the mud-men hurl only blobs of mud (maximum range 6"). These slow the movement rate of the victim by 1" if they hit. However, while hurling blobs of mud, the mud-men move towards their opponents at their full movement rate. Once within 1" they will hurl themselves (literally) rather than a mere blob. A successful hit means the death of the mud-man but also slows the victim's movement by 4". A miss means that the mud-man must spend the next round reforming to be ready to attack again.

Once a victim's movement rate is reduced to zero or below he becomes unable to move, even to wipe the mud from his face, and begins to suffocate, taking 1-8 points of damage per round until his mouth and/or nose are cleared. The victim will die from suffocation after five rounds unless rescued.

The hardened mud can be broken away from wholly or partially immobilized creatures. In this manner movement can be restored at a rate of 1" per five rounds.



Note that mud-men cannot sense creatures outside their pool and will not attack them. Once there are no living opponents left within the pool, therefore, the roused mud-men will sink back below the surface, rising again if the pool is re-entered.

Mud-men are affected by all spells which cause damage directly to living creatures (e.g. **cause light wounds**, **magic missile**, **fireball**, **flame strike**). In addition certain other spells have the following effects:

<b>dispel magic, dlg</b>	As <b>fireball</b> cast by a magic user of the same level as the caster.
<b>transmute mud to rock</b>	Kills all mud-men which it is able to affect (no saving throw).

They are immune to poisoning, whether produced magically (e.g. **cloudkill**, **poison**) or otherwise, and are similarly unaffected by spells which affect the mind (e.g. **charm**, **sleep**) or by psionics.

So long as mud-men are not fully formed from their pool, the damage caused by spells cast on them which do not have an area of effect (e.g. **magic missile**) is divided amongst them (fractions rounded down) since the substance of their bodies is evenly spread out in the mud.

## THE BARKBURR

FREQUENCY: Rare  
 NUMBER APPEARING: 1-5  
 ARMOUR CLASS: 0/8 (see below)  
 MOVE: ½" or leap 20 feet (see below)  
 HIT DICE: 2-6  
 % IN LAIR: 100%  
 TREASURE TYPE: see below  
 NUMBER OF ATTACKS: 1  
 DAMAGE/ATTACK: 1 point  
 SPECIAL ATTACKS: Lignification  
 SPECIAL DEFENSES: see below  
 MAGIC RESISTANCE: Standard but immune to certain spells  
 (see below)

INTELLIGENCE: Non

ALIGNMENT: Neutral

SIZE: small (2-3 feet across)

PSIONIC ABILITY: Nil

attack/defense modes: Nil

Level/xp value: 1 HD II/45 + 1 per hit point

2 HD III/65 + 2 per hit point

3 HD III/90 + 3 per hit point

4 HD III/125 + 4 per hit point

Barkburrs are a form of animated plant which arise spontaneously within a wood or forest in order to defend it. They have anatomical similarities to limpets, consisting of a very hard woody carapace (AC 0) shielding a soft woody interior (AC 8).

They will always be encountered in their lair, which will consist of one or more oddly shaped trees (the metamorphosed remains of past victims — see below), attached to a tree where they are very hard to distinguish from ordinary burrs. Only druids and rangers have any chance of recognising a barkburr for what it is (4% chance plus 1% per level). Such lairs will normally be on paths through a wood where travellers are likely to pass.

Barkburrs are extremely sensitive to actions which conflict with the interests of the wood or forest they live in, and are capable of detecting such an act (basically anything which a druid would find abhorrent) occurring within a radius of 1 mile. They will attack any humanoid creature coming within 20 feet if it has performed such an act within a radius of 1 mile and/or if its alignment includes an evil component.

A barkburr attacks by leaping suddenly from the supporting tree towards its intended victim who may be up to 20 feet away. Because of its camouflage it will always gain surprise unless recognised. It will attempt to attach its soft underside to the victim's body and then insert a sharp, barbed tube (inflicting one point of damage). For determining the success or failure of this whole attack routine (which takes but a single round) it should be treated as a single attack by a 6 HD monster.

If the attack fails, the barkburr falls to the ground where it is practically helpless (see below). If the attack succeeds then in the next round the barkburr will begin to inject a lignifying poison into the victim. This injection will continue for up to two rounds plus one round for each of the barkburr's hit dice. Each round the victim must save vs. Poison or lignification will set in. This process involves a rapid transformation of the victim into a small tree; feet become roots, body and legs the trunk and head and arms branches. The transformation takes one turn, and once started will not cease even if the barkburr is killed and/or removed. Most of the victim's equipment close to his body (clothes, armour, etc.) are enclosed by bark, but some (e.g. a sword, a shield or a ring) may remain hanging from a branch or caught in the roots. Of the gear which is enclosed, all but magical items, gold, silver, platinum and gems will be absorbed into the wood of the tree over a period of two to seven hours.



A barkburr may be removed from its victim (before or after lignification has set in) by killing it, applying fire or by force. Attacks on the barkburr are made against its AC 0 carapace, and attacks which miss stand a chance of injuring the victim. Attacks which miss should be rolled again against the victim's AC. The application of fire has a 15% cumulative chance per round of dislodging the barkburr, which takes only one point of fire damage per round from fire applied to the outer carapace, but the victim will take fire damage unless protected. It is not possible to remove a barkburr by pulling it directly away from the victim but pulling or pushing it sideways will succeed if a roll of 5d10 is less than the total strength being applied. This latter method will inflict 1-10 points of damage on the character if successful as the barbed poison needle is torn out. A maximum of three people, including the victim, can act together to attempt to remove a barkburr in this way.



On the ground a barkburr is almost helpless; unable to leap from this position, it can only crawl at 1/2" and is easily flipped over to reveal its AC 8 underside. Fire applied to the underside inflicts normal damage.

Since they have no mind as such, barkburrs are immune to spells such as **charm monster** or **sleep**.

Once lignification has set in the barkburr will cease injecting poison and use the victim as a platform from which to launch an attack on any other eligible victim within 20 feet. Note, however, that a barkburr is only capable of injecting poison for a total of two rounds plus one round per hit dice each day. Note also that the poison is only effective if injected by a barkburr.

Once lignified, a creature begins a further transformation into a form which is safe from the point of view of the wood. This process takes as many days as the victim had levels or hit dice, and during this time the creature remains helpless in tree form (having AC 10 and its original number of hit points). At the end of the period the creature either remains fixed in its tree form or undergoes a rapid metamorphosis into a woodland creature or a druid. The final form adopted is determined by rolling d% and consulting the following table:

- 01-50 Ordinary healthy tree (which grows to full size within 3 months).  
 51-70 Adult badger.  
 71-80 Adult giant weasel.  
 81-90 Treant (7 HD).  
 91+ Druid (1st level, abilities; S, I, D, Co — as before; W 14; Ch 16).

For creatures whose original alignment included a neutral component, add 10 to the die roll; for true neutral creatures add 20.

A creature who adopts any final form other than the druid will have no desire whatever to leave the wood and will resist attempts to make him do so.

Only a full **wish** will restore a creature to its original form once the transformation is completed. While the transformation is still in progress, however, the victim may be restored by means of a **wish**, **limited wish**, **polymorph other**, **turn wood** or **plant growth** (cast backwards). **Neutralise poison** has a 30% chance of success plus five percent per level of the caster. Note that any of these spells (including **neutralise poison**) will negate the initial lignification process if cast before it is completed (i.e. within one turn). **Cure disease**, **remove curse**, **dispel magic**, etc. will have no effect. Restored creatures will have lost one level or hit dice for each full day spent in tree form.

Barkburrs grow as a result of absorbing the energy levels of their victims and reproduce by budding. There is a 50% chance that a 6 HD barkburr will have one or two 2 HD offspring budding from it which will attack independently.

#### DIREBURRS

Unwholesome woods and forests will produce direburrs that will attack any humanoid coming within 20 feet regardless of his past actions or alignment. The results of their attacks are the same as for the ordinary barkburr except that the final form adopted by a lignified victim is always a dry, dead, leafless tree which cannot be restored by any means short of a full **wish**. Otherwise, direburrs are identical to barkburrs in all respects.

#### THE GREEN MAN (god of growth and abundance)

ARMOUR CLASS: 0  
 MOVE: 12"/Infinite  
 HIT POINTS: 120  
 NUMBER OF ATTACKS: None  
 DAMAGE PER ATTACK: None  
 SPECIAL ATTACKS: Intoxication (no saving throw)  
 SPECIAL DEFENSES: None  
 MAGIC RESISTANCE: 80%  
 SIZE: M  
 ALIGNMENT: Chaotic Neutral  
 WORSHIPPERS' ALIGNMENT: Neutral (lawful, true or chaotic)  
 SYMBOL: The hop  
 PLANE: Prime Material  
 CLERIC/DRUID: 14 Druid  
 FIGHTER: Nil  
 MAGIC USER/ILLUSIONIST: Nil  
 THIEF/ASSASSIN: Nil  
 MONK/BARD: 12 Bard  
 PSIONIC ABILITY: Nil (Immune)  
 S:18 I:15 W:23 D:18 (no AC bonus) C:25 Ch:20  
 SAVING THROW: 2 for everything  
 OTHER ABILITIES: Regeneration when in contact with the Prime Material Plane.

The Green Man is an inhabitant of the prime material plane who concerns himself with the plants and creatures of the natural, mundane world. He is also interested in the produce of nature, especially that used in the making of beers, ales and wines. This is reflected by his symbol which is the hop — foundation of the finest ales. He adopts many guises (gardener, brewer, forester, etc.) for his dealings with mortals amongst



which he favours the simple folk of the countryside. Known by many regional names (of which the Green Man, John Barleycorn and Mother Nature's Son are but three) he is often called upon by peasants and smallholders dependent on the whims of nature to increase their crops and to help them celebrate harvest home in the manner that only he can. They enjoy his appearances as a welcome break from the harshness of daily toil.

His ability to transport himself within the prime material plane effortlessly and instantaneously through both space and time allows him to roam widely through the natural world while still devoting the bulk of his attention to tending one or more locations in which he has a particular interest. He can, however, only be in one place or time in any moment.

His love of living creatures is broadcast by his songs. Many and beautiful they are! These songs are his peculiar magic and he uses them to encourage life to grow and prosper to his will. The Green Man is rarely found without a song on his lips and never without one in his heart.

The Green Man generally avoids those whose alignments do not include at least one neutral component and abhors violence. He is always aware of violence committed against those he favours, and will occasionally intervene to aid them. In such circumstances, or if threatened personally, he will not enter into combat as such, nor will he resist attacks (thus giving attackers +4 to hit). Instead he will simply breathe on his assailants (see below). So long as he remains within the prime material plane and in contact with the ground he will regenerate at a rate of 120 hit points per round. If reduced to below zero hit points he will teleport away from the danger to a safe place where he will regenerate at the rate of 40 hit points per round until fully healed. When hale once more he will return to the fight to complete his task. If seriously threatened (i.e. losing more than 50% of his hit points each round) he will use his teleport abilities to dodge around the melee (thus reducing his opponent's chances to hit by -4) whilst continuing to use his breath weapon.

The Green Man has few permanent worshippers. Some, however, choose him as their patron deity, although he takes little interest in his followers and will only influence the spheres of natural abundance and then only rarely.

Clerics who worship the Green Man must become moderately intoxicated before sleeping in order to regain their spells.

#### Breath Weapon

Once per round the Green Man can breathe out a cloud of radius 10 feet centred 10 feet in front of him. All those within the cloud become slightly intoxicated (see the **Dungeon Masters Guide** pp 82-83); there is no saving throw. On each successive occasion that a creature is caught by the cloud its level of intoxication increases one step until a comatose state is reached. The DM should use the **Intoxication Table** in the **DMG** to find the effect of this intoxication and the **Intoxication Recovery Table** to determine how the victims recover their sobriety. On each occasion that a character becomes comatose there is a 3% (cumulative) chance that he or she will become a dipsomaniac (see **DMG** p 83).

Mythos:	Old English
Sphere of Control:	Natural Growth
Animal:	Harvest Mouse
Clerics: Male:	Yes
Female:	Yes
Non-human:	Yes
Raiment: Head:	Often bearded and/or hirsute
Body:	Comfortable tunic
Colour(s):	Woodland Green
Holy Days:	Equinoxes, Midsummer, Midwinter and any day his followers can reasonably justify to themselves
Sacrifice/Propitiation:	Never
Place of Worship:	Anywhere in contact with earth (particularly lush meadows, fields of crops, orchards, etc.)

#### The Old English Mythos

The Old English mythos is not a clearcut pantheon. The Green Man falls into this category, along with other legendary figures such as Wayland and Gogmagog, because he does not fit anywhere else. The mythos has no special general conditions or rites for its followers.

Design and Development: David J. Browne, Tom Kirby and Graeme Morris  
 Editing: Tom Kirby, Carole Morris, Graeme Morris and Don Turnbull  
 Art: De Leuw, Timothy Truman  
 Cartography: Graeme Morris  
 Playtesting: Jim Bamba, Jeanette Blaaser, Clive F. Booth, Michael W. Brunton, Chris Hall, Bill Howard, Kate Kirby, Gary Kirkham, Steve Mote, Chris Rick, Dave Tant, Don Turnbull, Pat Whitehead.

## CHARACTER ROSTER

The tables on this page list 20 characters and suggested magic items for them. Players may use these characters rather than create their own, or they may be used by the DM as NPCs to round out a party. Players should be permitted to outfit their characters as usual, and choose their own alignment. All listed armour classes are without shields, but include adjustments due to dexterity and/or magical items.

Name	Level	Race/ Sex	Class	hp	AC	S	I	W	D	C	CH
1. Hildron	4	H/F	F	23	3	15	11	11	13	13	9
2. Fahsawn	5	D/M	F	24	3	16	8	13	13	9	6
3. Blish	6	H/M	F	38	3	15	12	12	11	16	9
4. Amalgam	6	H/M	F	37	2	13	8	7	15	9	16
5. Aeron	5	H/M	P	25	3	13	14	14	9	10	18
6. Foresight	5	H/M	R	36	4	17	14	14	10	15	12
7. Rowel	6	½E/F	R	27	3	14	18	15	7	14	13
8. Diansail	4	H/M	D	17	8	10	11	14	14	10	15
9. Meorpro	5	H/F	D	20	8	11	16	16	14	11	16
10. Taminia	6	H/F	D	30	8	12	12	16	11	11	15
11. Mittiere	5/4	½E/M	C/F	21	3	14	8	15	7	10	13
12. Greaves	4	H/M	C	28	4	8	13	16	6	16	9
13. Passerine	5	H/M	C	29	3	8	11	14	14	10	8
14. Manumine	6	H/F	C	33	3	12	9	15	8	11	7
15. Pallian	5/4	½E/F	C/Mu	24	3	7	15	16	14	16	10
16. Lambda	4	H/F	Mu	7	10	9	16	12	13	8	13
17. Cline	5	H/M	Mu	11	9	5	17	10	10	10	8
18. Osmund	6	H/M	I	12	8	11	15	10	16	12	11
19. Senarius	3/4	E/F	Mu/T	8	7	12	13	12	13	8	13
20. Neune	4	½EM	T	20	7	8	9	12	15	17	11

## MAGICAL ITEMS

- longsword* +2 (detect magic 1" radius, Int 12, Ego 3);  
potion of fire resistance
- shield* +1
- boots of speed*
- 10 arrows +2
- ring of feather falling; *broadsword* +1 (NSA)
- boots of elvenkind*
- Wand of enemy detection*
- bag of holding*; potion of *polymorph (self)*
- scimitar* +1
- shield* +1
- scroll with *hold person, heal, slow poison*
- mace* +2
- shield* +1; potion of *healing* (2 doses)
- scroll of *protection from undead*
- Keoghtom's Ointment* (1 full jar)
- scroll with *blink, shatter, tongues*; potion of *invisibility*
- ring of *protection* +1
- no magical items
- leather armour* +1
- dagger* +2



This product is only one of the many popular playing aids for the **ADVANCED DUNGEONS & DRAGONS®** Fantasy Adventure Game produced by TSR Hobbies, Inc. Playing aids currently available for the AD&D™ game system include:

Players Handbook (everything the AD&D player needs to know)  
Dungeon Masters Guide (the essential reference work for DMs)  
Monster Manual (over 350 monsters, with full explanations and many illustrations)  
DEITIES & DEMIGODS™ Cyclopedia (over a dozen pantheons given in AD&D terms to aid the DM in expanding a campaign)  
FIEND FOLIO™ Tome of Creatures (a collection of new and fearsome monsters by British contributors and artists)  
AD&D Dungeon Masters Screen (combat tables, saving throws, psionics, and many other valuable reference tables for DMs and players)  
THE WORLD OF GREYHAWK™ Fantasy World Setting (two full-color continental maps, with complete descriptions of history, geography, and legends. Approved for use with the AD&D game system)

Dungeon Module A1 (Slave Pits of the Undercity)  
Dungeon Module A2 (Secret of the Slavers Stockade)  
Dungeon Module A3 (Assault on the Aerie of the Slave Lords)  
Dungeon Module A4 (In the Dungeons of the Slave Lords)  
Dungeon Module C1 (The Hidden Shrine of Tamoachan)  
Dungeon Module C2 (The Ghost Tower of Inverness)  
Dungeon Module D1-2 (Descent into the Depths of the Earth)  
Dungeon Module D3 (Vault of the Drow)  
Dungeon Module G1-2-3 (Against the Giants)

Dungeon Module I1 (Dwellers of the Forbidden City)  
Dungeon Module L1 (The Secret of Bone Hill)  
Dungeon Module Q1 (Queen of the Demonweb Pits)  
Dungeon Module S1 (Tomb of Horrors)  
Dungeon Module S2 (White Plume Mountain)  
Dungeon Module S3 (Expedition to the Barrier Peaks)  
Dungeon Module S4 (The Lost Caverns of Tsojcanth)  
Dungeon Module T1 (The Village of Hommlet)  
Dungeon Module U1 (The Sinister Secret of Saltmarsh)  
Dungeon Module U2 (Danger at Dunwater)

Other releases of additional items relating to the AD&D game system are planned for the future. TSR Hobbies publishes a complete line of games, playing aids, and gaming accessories available from better hobby, game, and department stores nationwide.

**ADVANCED DUNGEONS & DRAGONS** is a registered trademark of TSR Hobbies, Inc. The designation "TM" is used to refer to other trademarks owned by TSR Hobbies, Inc.

©1983 TSR Hobbies, Inc. All Rights Reserved.

ISBN 0-88038-003-9  
394-53004-7TSR0550  
116-F-9066

9066  
PRINTED IN U.S.A.